

FWC Warm Mineral Springs Restoration Project



Project Description

The Florida Fish and Wildlife Conservation Commission (FWC) is working with partners to restore Warm Mineral Springs' downstream run, which is considered the most important natural manatee warm-water refuge along Florida's southwest coast. Located in Sarasota County near the City of North

Port, this project will improve warm-water access and habitat quality for the more than 100 Florida manatees that have been documented using Warm Mineral Springs Creek as a refuge during the winter months.

Historical and current land use, bank erosion, sedimentation and invasive plants are degrading the quality of the creeks flowing from Warm Mineral Springs. The permitted project will include removal of some sediments from the spring run and stabilization of creek banks.

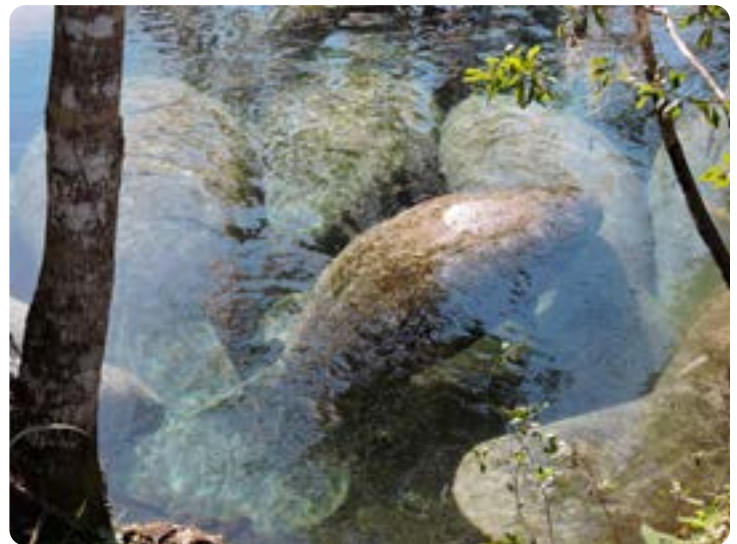
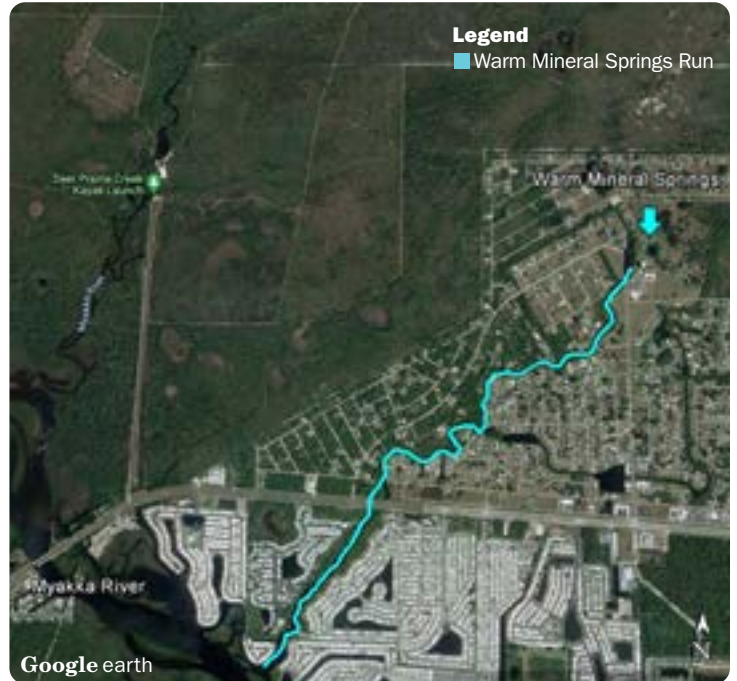
While geographically distant from the Atlantic Coast Manatee Unusual Mortality Event (UME), this collaborative project directly benefits the Florida manatee population by improving critically important warm-water habitat.

Project Benefits

- Improve manatee access to warm-water habitat
- Increase volume of manatee warm-water habitat
- Remove excessive sediment and restore natural creek depths
- Improve long-term bank stability

Project Size:

6.06 acres of freshwater spring-fed creek



Done in partnership with:

- U.S. Army Corps of Engineers
- Sarasota County
- The Nature Conservancy
- Coastal and Heartland National Estuary Partnership
- City of North Port
- National Wildlife Federation



MyFWC.com