

## APPENDIX O: Maps of additional impacts of human development stressor risk factors to GDEs in Nevada

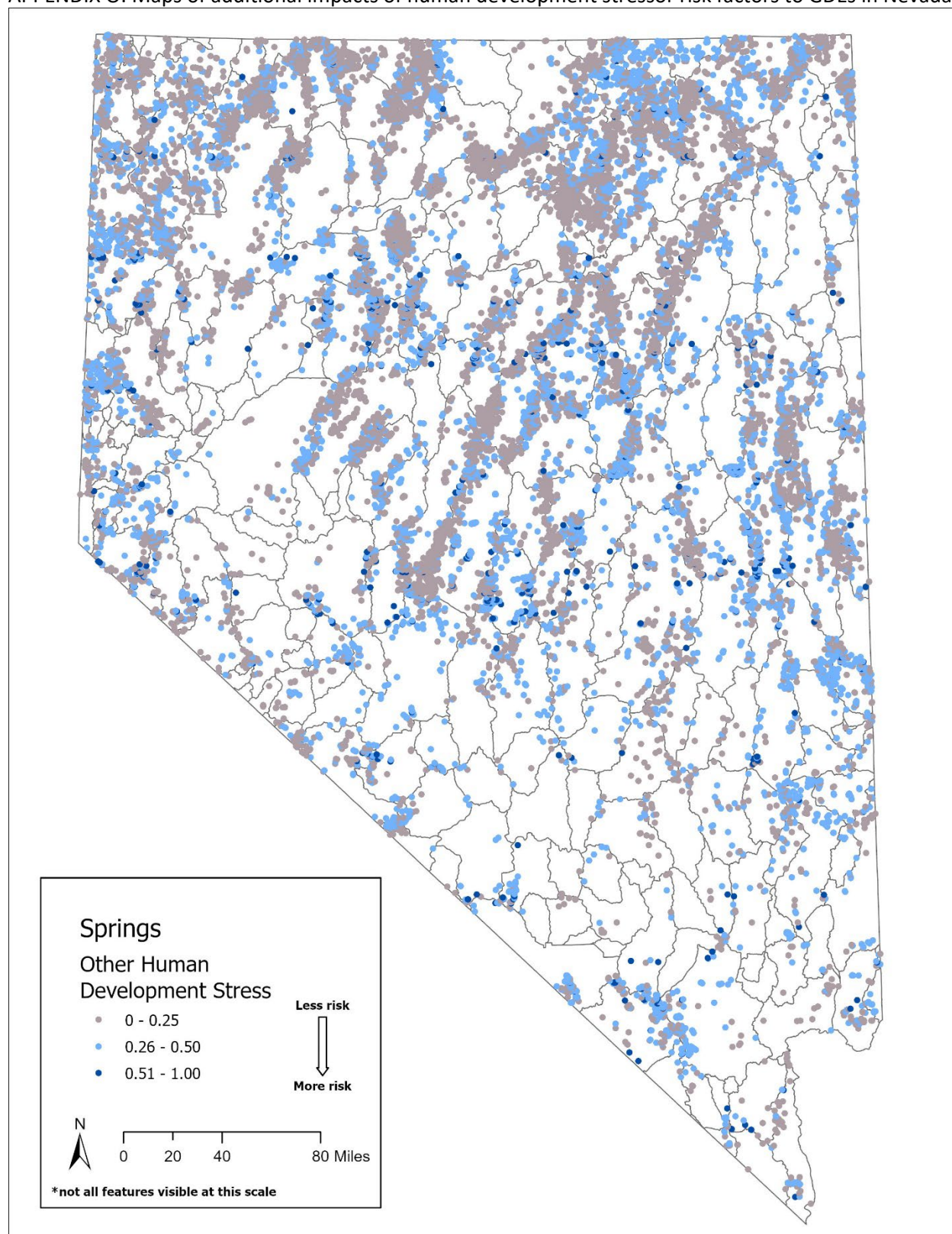


Figure O-1. Additional impacts of human development stressor risk factor values for GDE springs in Nevada. Ratings are from 0.00 (negligible risk) to 1.00 (high risk).

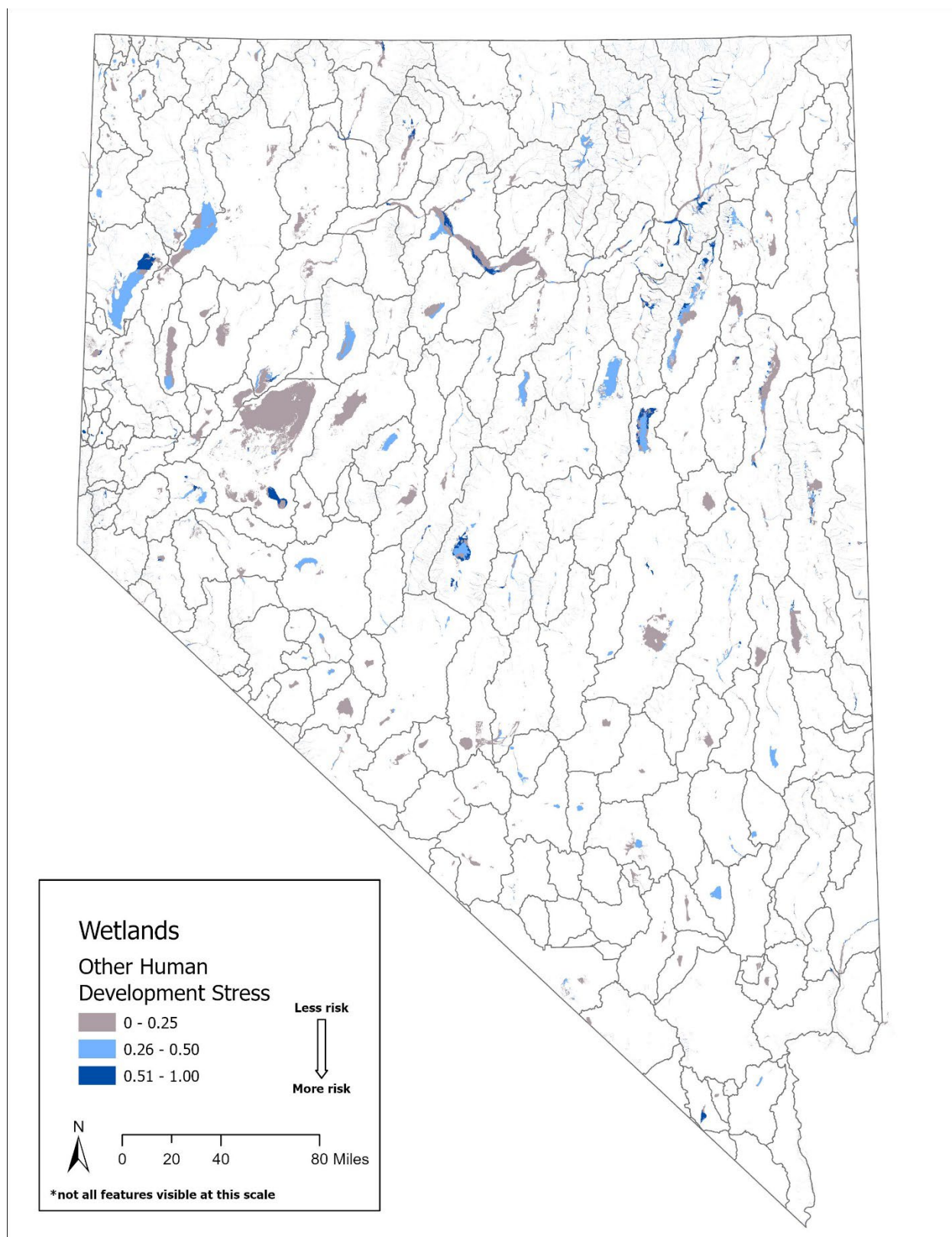


Figure O-2. Additional impacts of human development stressor risk factor values to GDE wetlands in Nevada. Ratings are from 0.00 (negligible risk) to 1.00 (high risk).



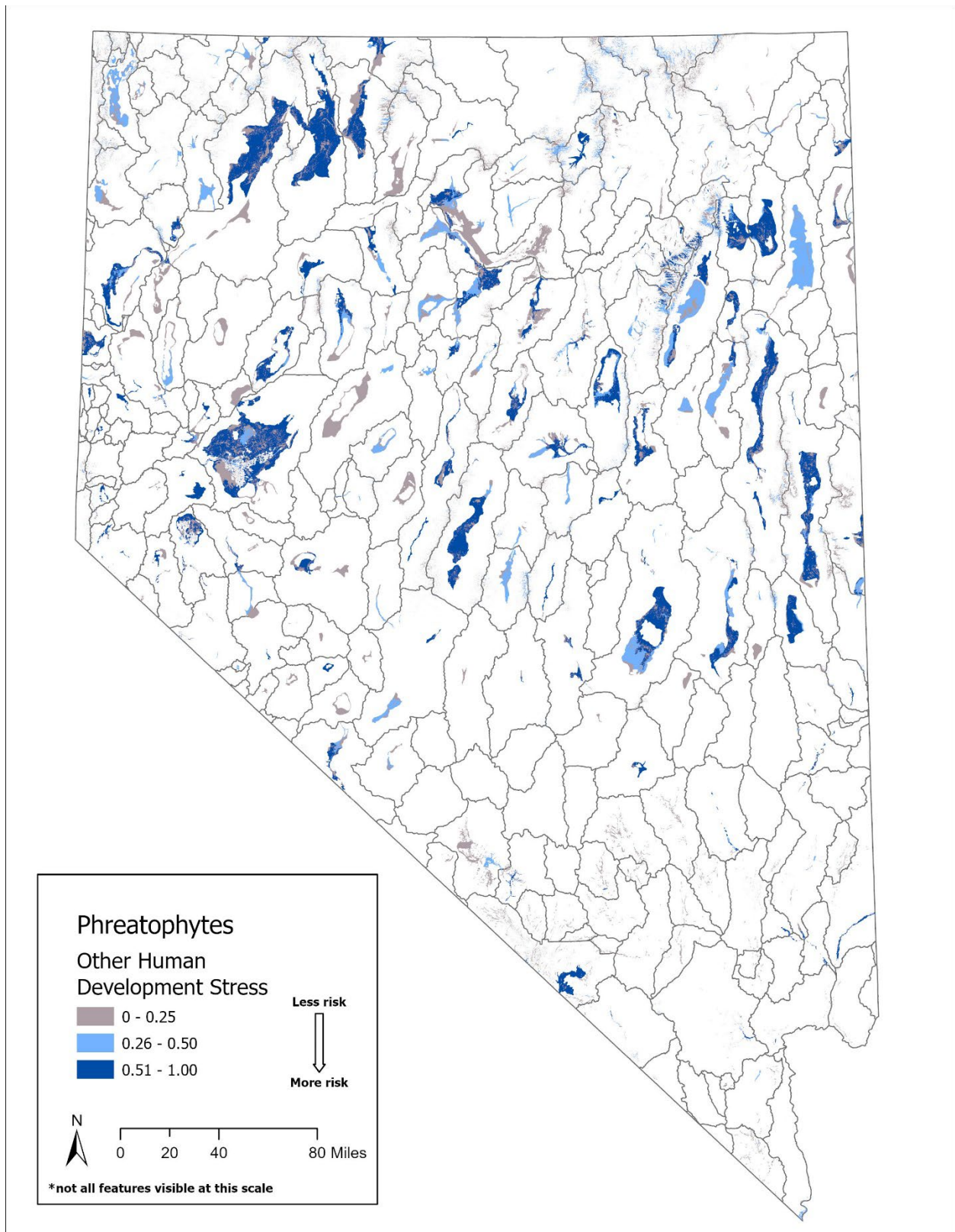


Figure O-3. Additional impacts of human development stressor risk factor values to GDE phreatophyte communities in Nevada. Ratings are from 0.00 (negligible risk) to 1.00 (high risk).

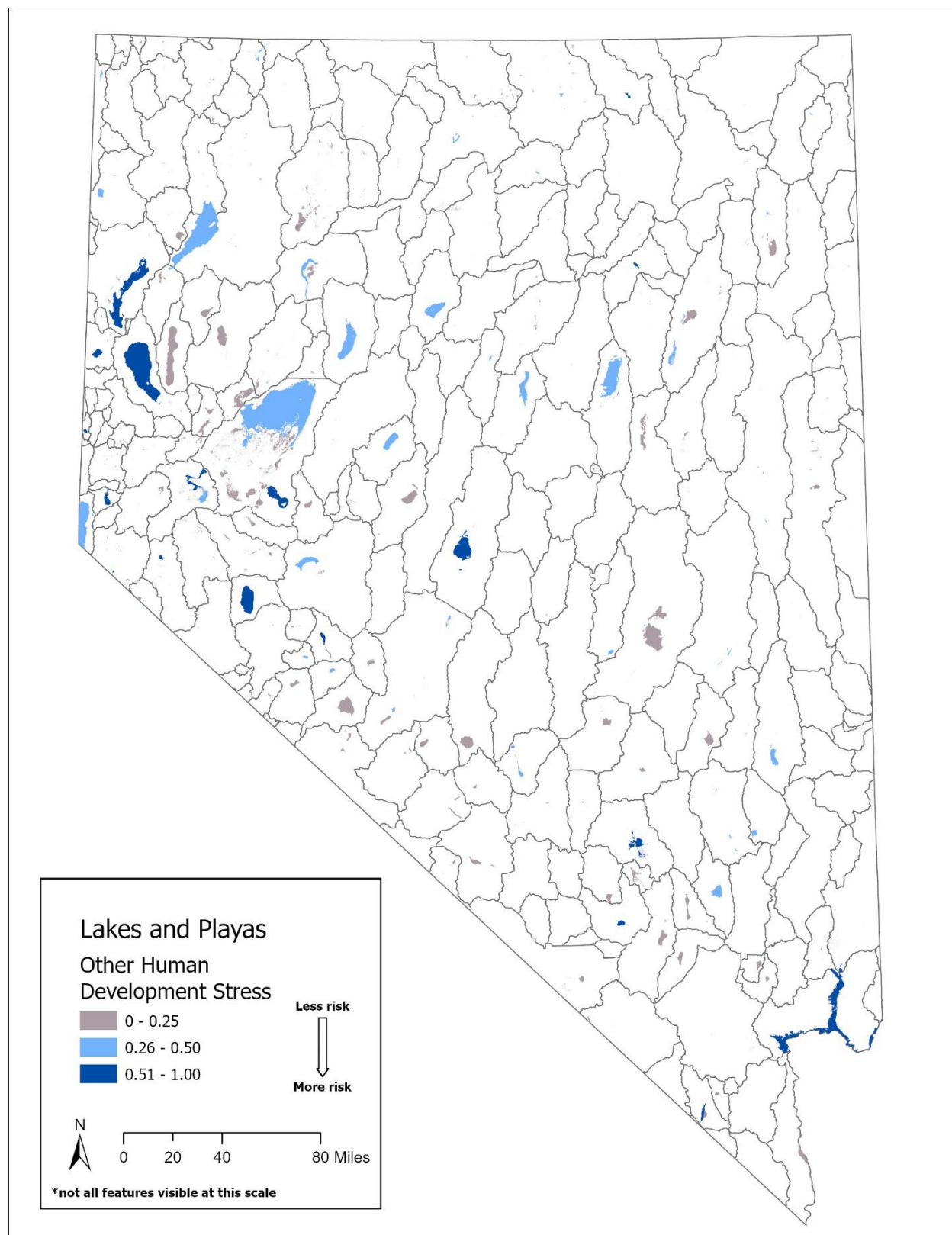


Figure O-4. Additional impacts of human development stressor risk factor values to GDE lakes and playas in Nevada. Ratings are from 0.00 (negligible risk) to 1.00 (high risk).



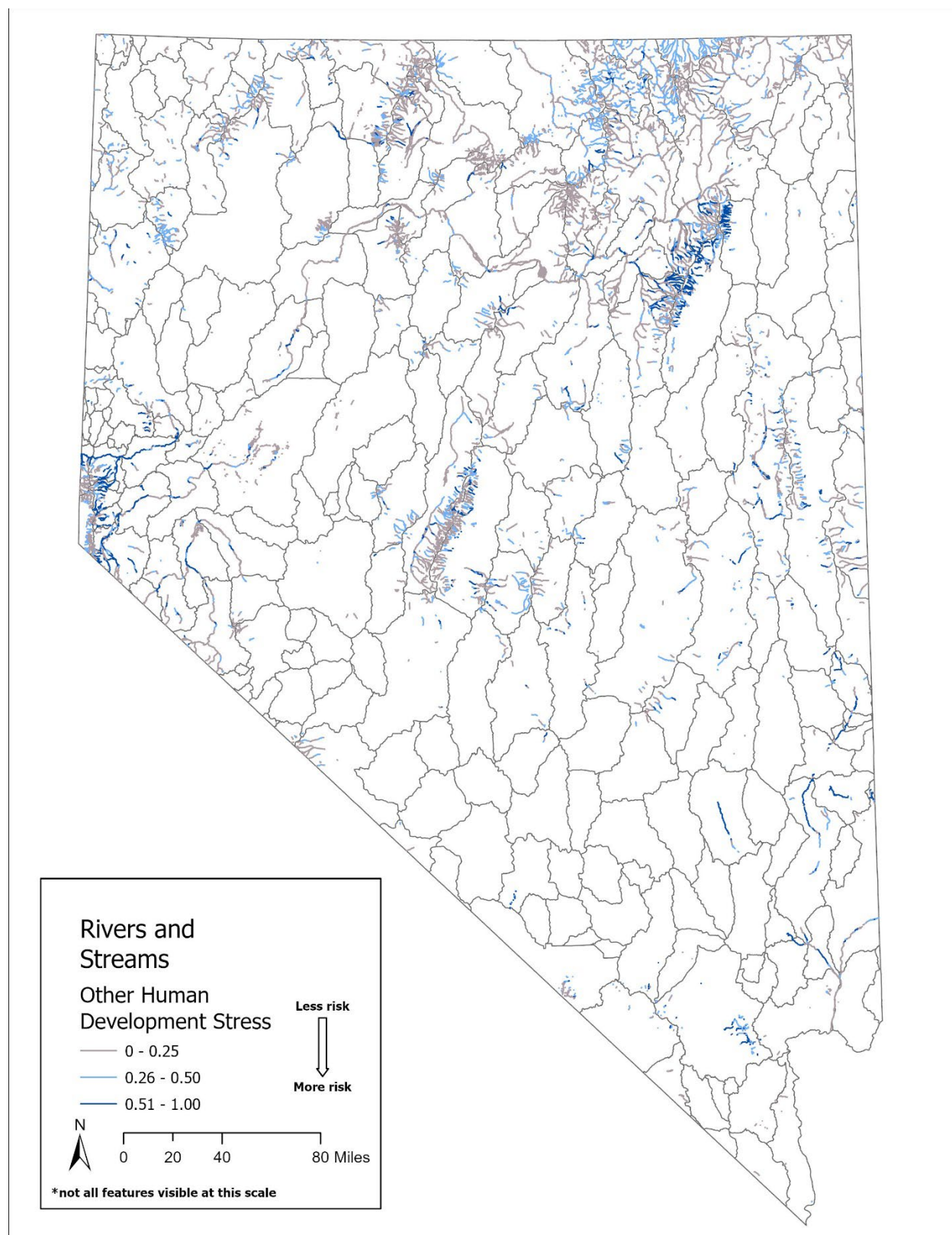


Figure O-5. Additional impacts of human development stressor risk factor values to GDE rivers and streams in Nevada. Ratings are from 0.00 (negligible risk) to 1.00 (high risk).

## APPENDIX P: Maps of additional impacts of human development threat risk factors to GDEs in Nevada

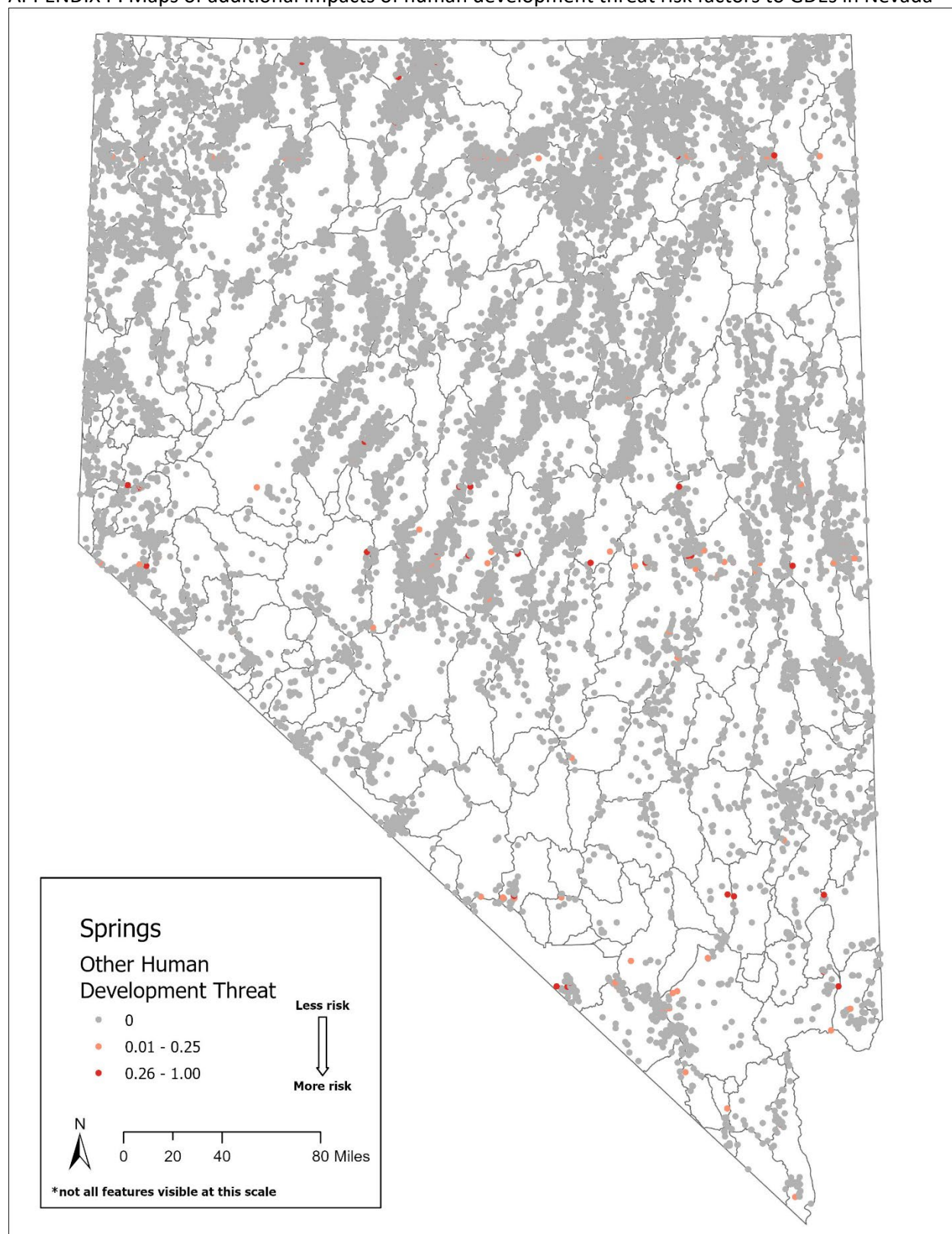


Figure P-1. Additional impacts of human development threat risk factor values for GDE springs in Nevada. Ratings are from 0.00 (negligible risk) to 1.00 (high risk).



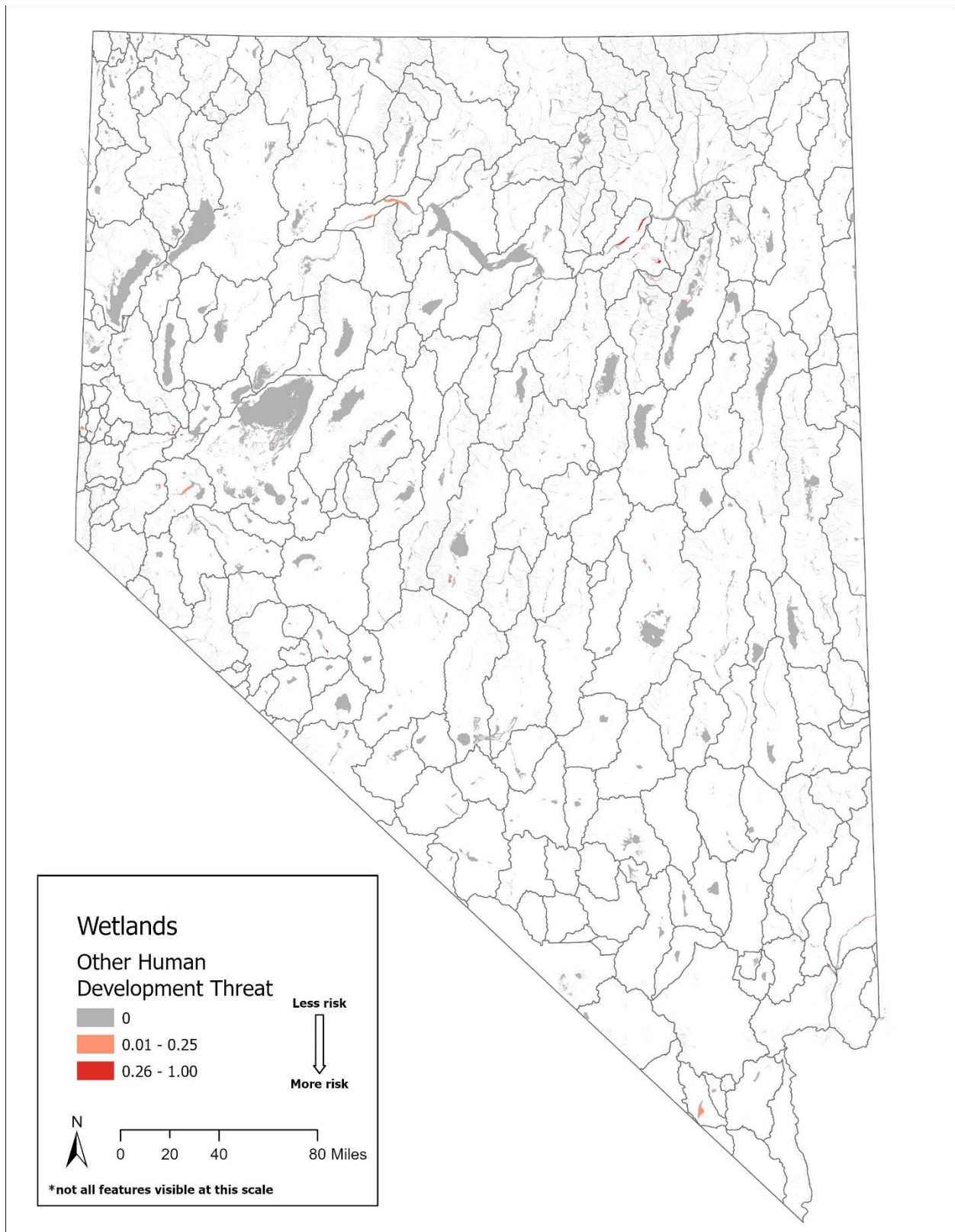


Figure P-2. Additional impacts of human development threat risk factor values to GDE wetlands in Nevada. Ratings are from 0.00 (negligible risk) to 1.00 (high risk).

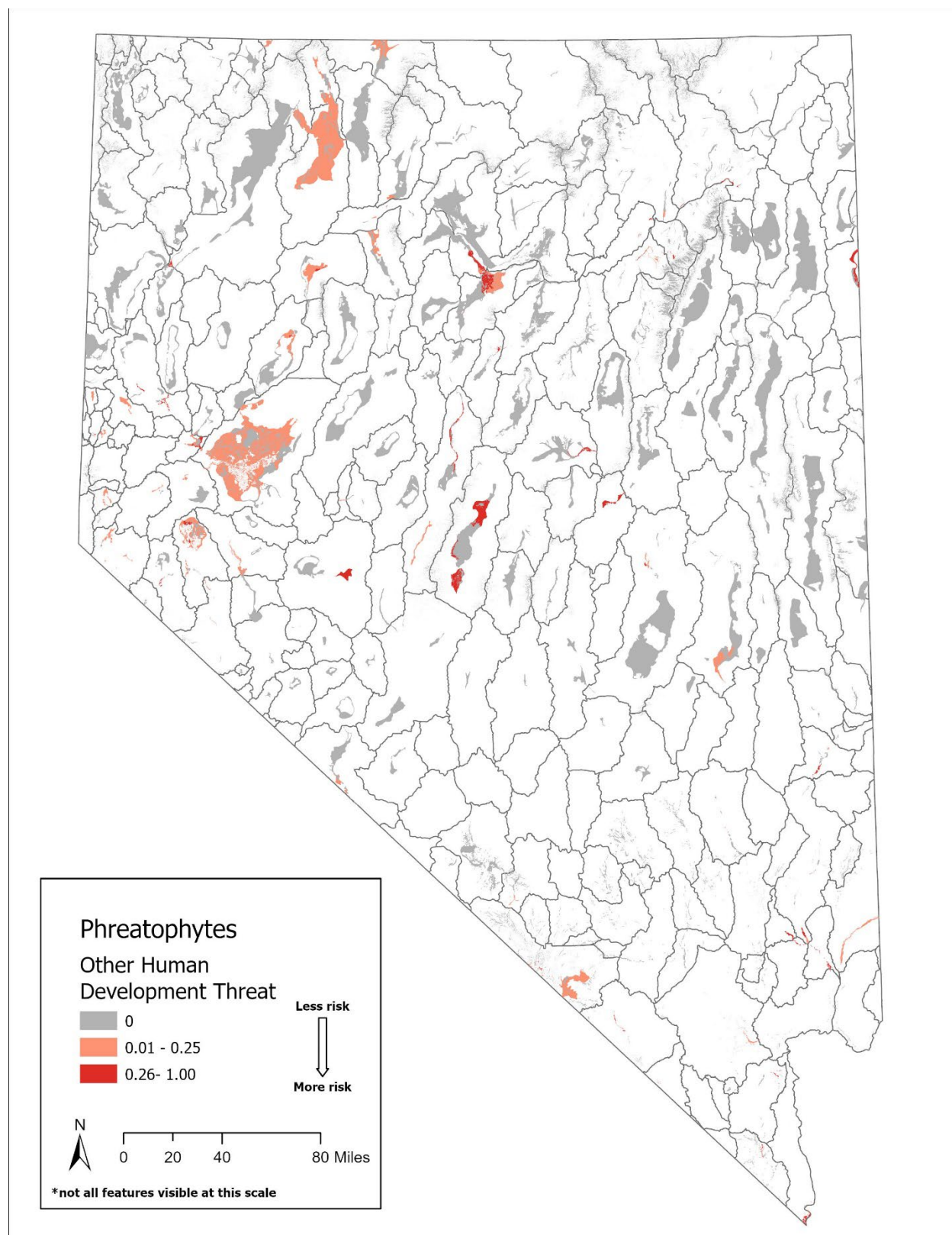


Figure P-3. Additional impacts of human development threat risk factor values to GDE phreatophyte communities in Nevada. Ratings are from 0.00 (negligible risk) to 1.00 (high risk).



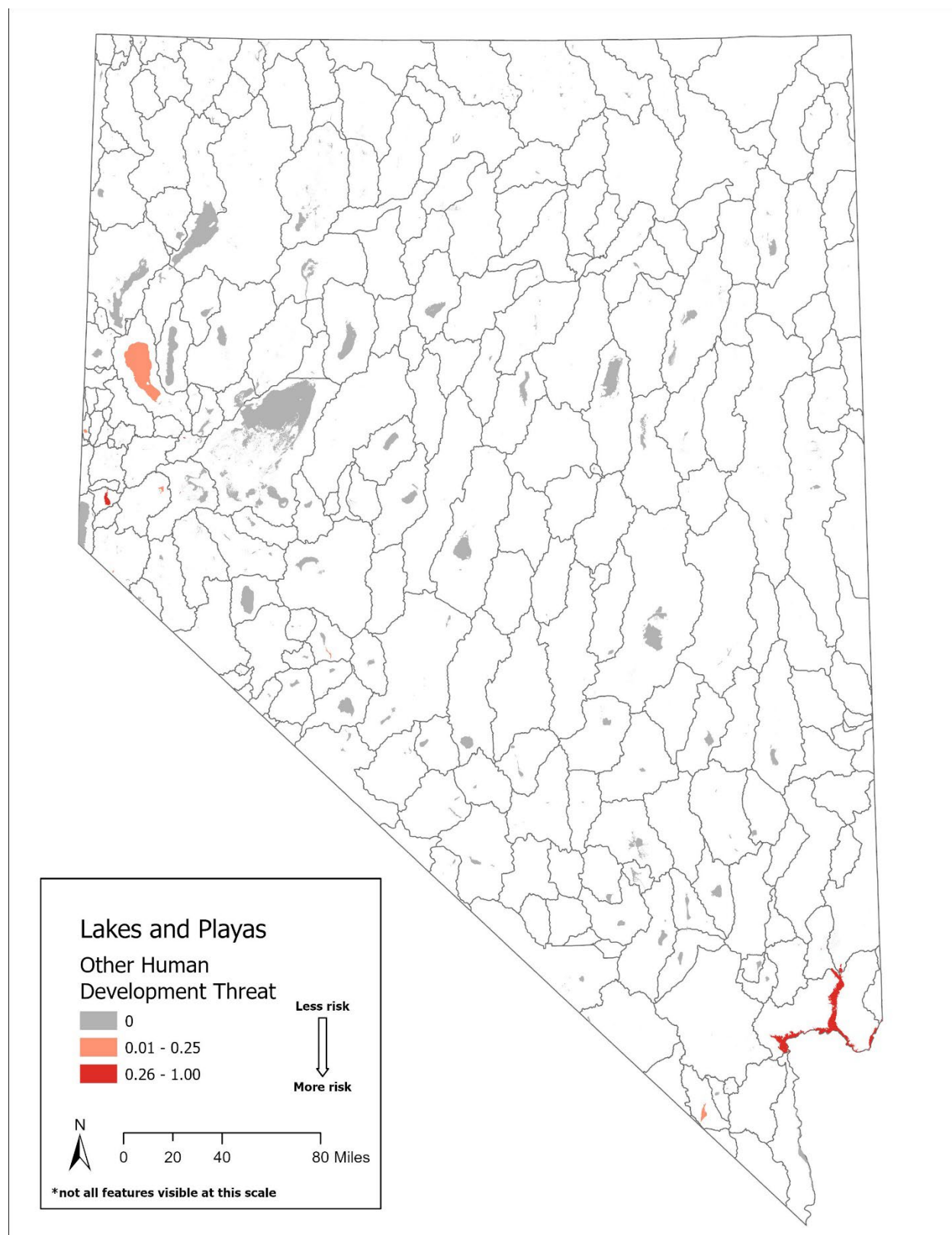


Figure P-4. Additional impacts of human development threat risk factor values to GDE lakes and playas in Nevada. Ratings are from 0.00 (negligible risk) to 1.00 (high risk).

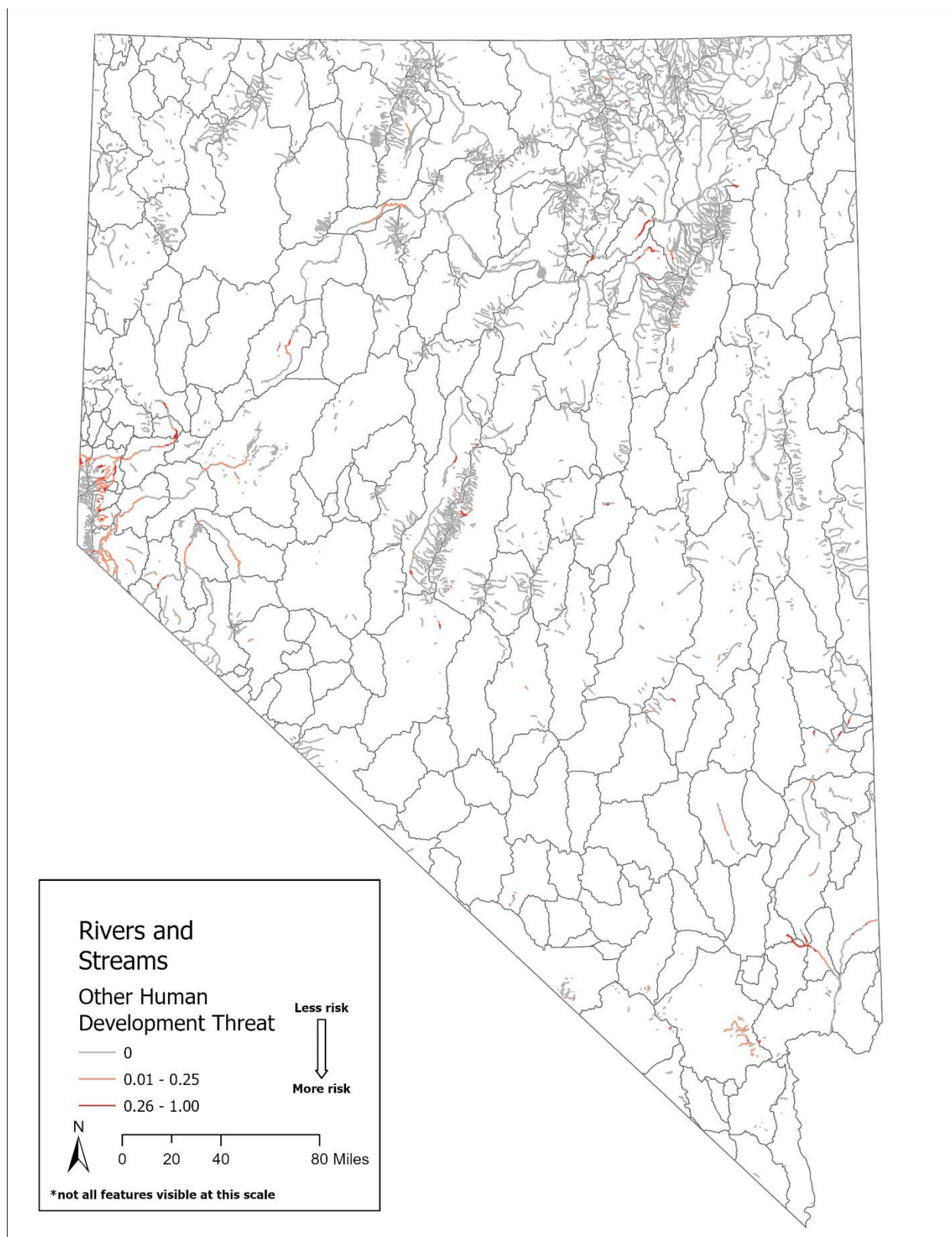


Figure P-5. Additional impacts of human development threat risk factor values to GDE rivers and streams in Nevada. Ratings are from 0.00 (negligible risk) to 1.00 (high risk).