

APPENDIX J: Maps of ungulate stressor risk factors to GDEs in Nevada

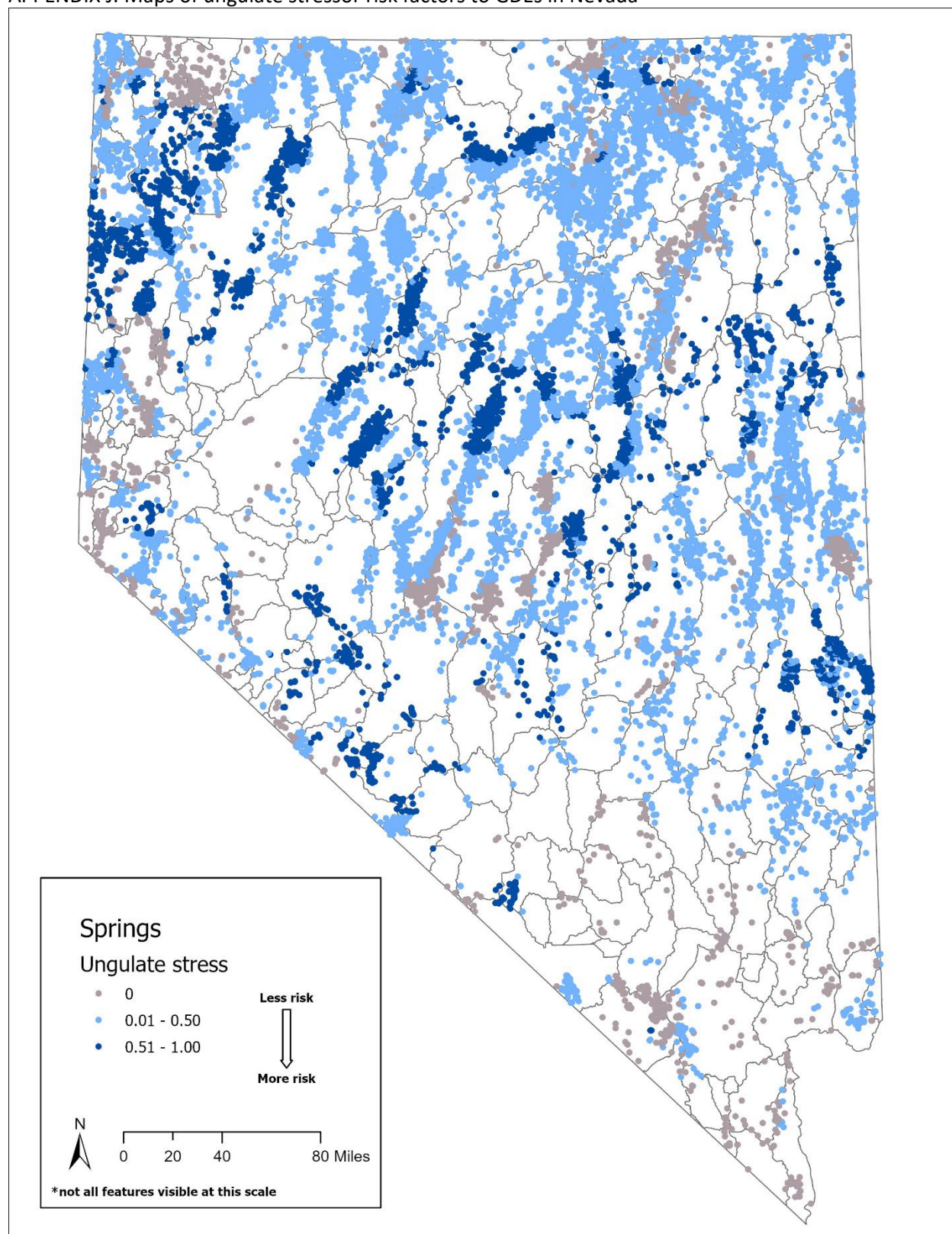


Figure J-1. Ungulate stressor risk factor values for GDE springs in Nevada. Ratings are from 0.00 (negligible risk) to 1.00 (high risk).

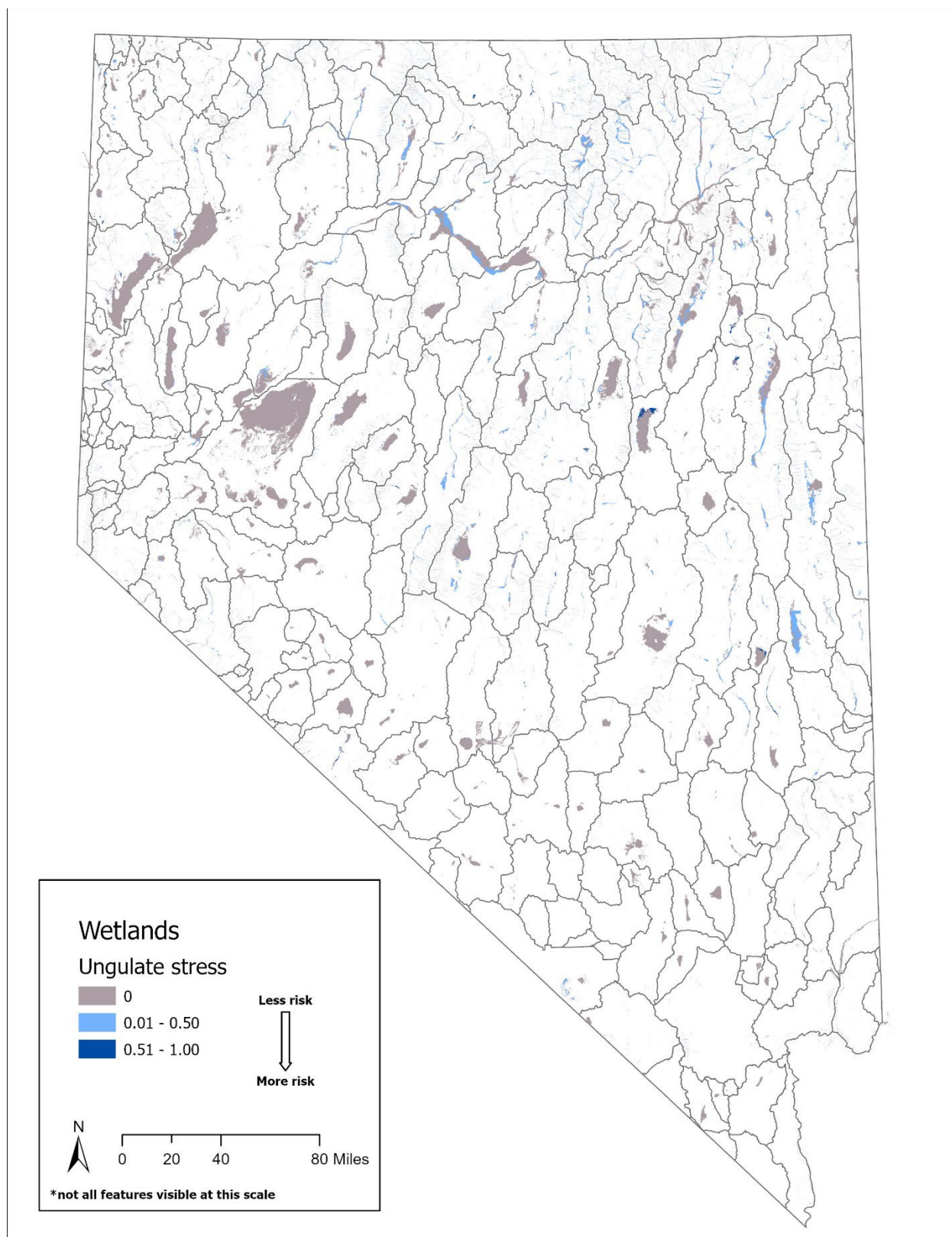


Figure J-2. Ungulate stressor risk factor values to GDE wetlands in Nevada. Ratings are from 0.00 (negligible risk) to 1.00 (high risk).

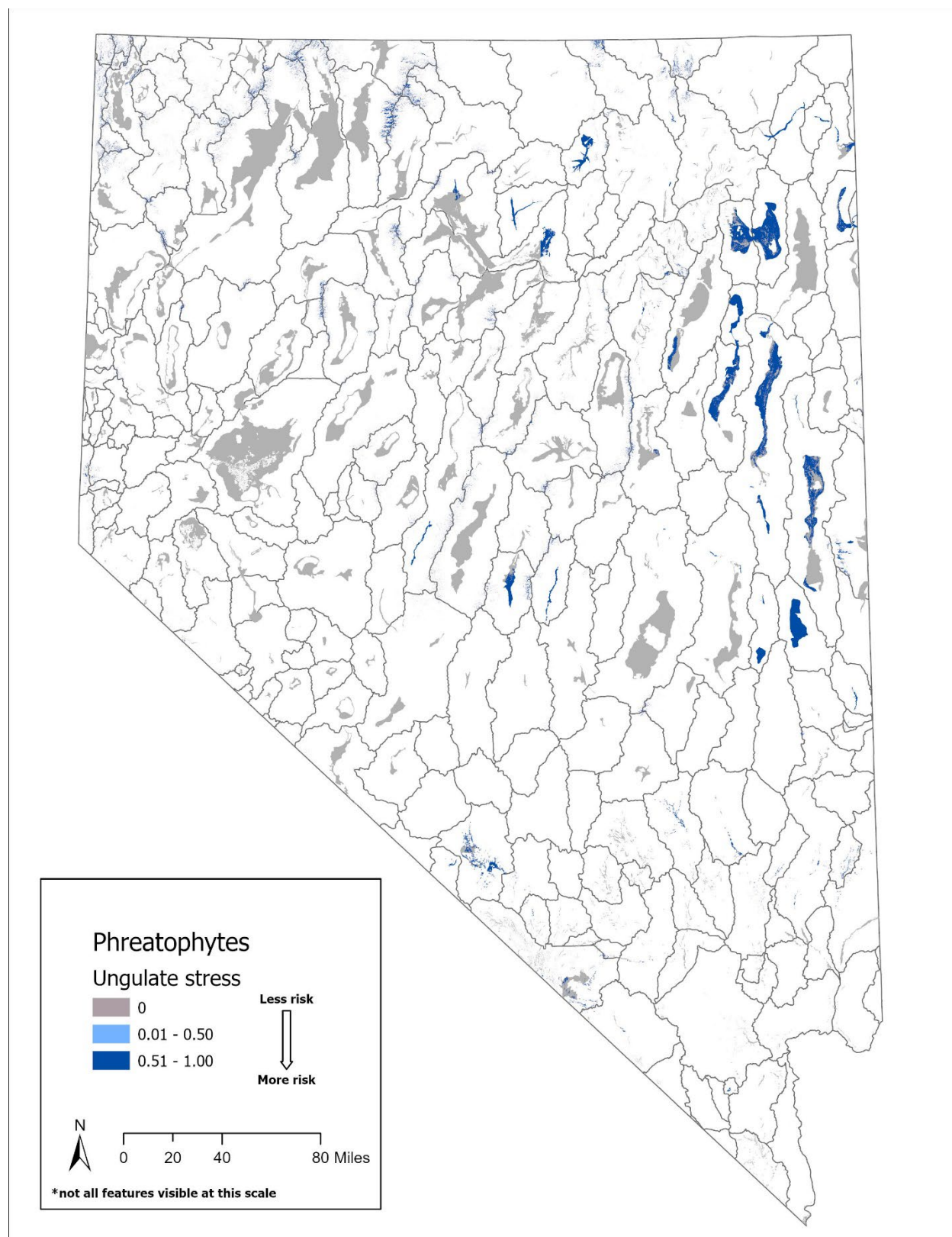


Figure J-3. Ungulate stressor risk factor values to GDE phreatophyte communities in Nevada. Ratings are from 0.00 (negligible risk) to 1.00 (high risk).

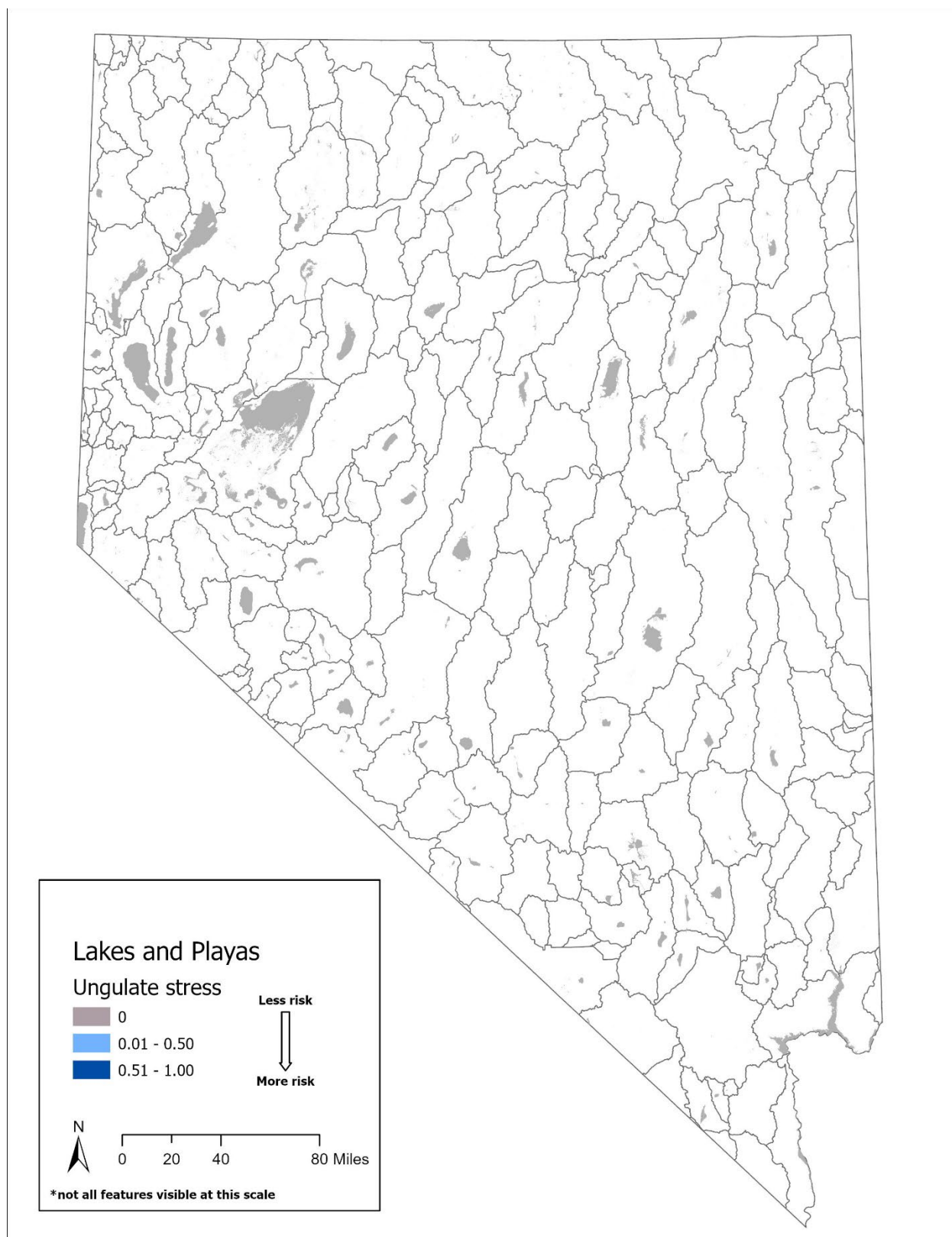


Figure J-4. Ungulate stressor risk factor values to GDE lakes and playas in Nevada. Ratings are from 0.00 (negligible risk) to 1.00 (high risk).

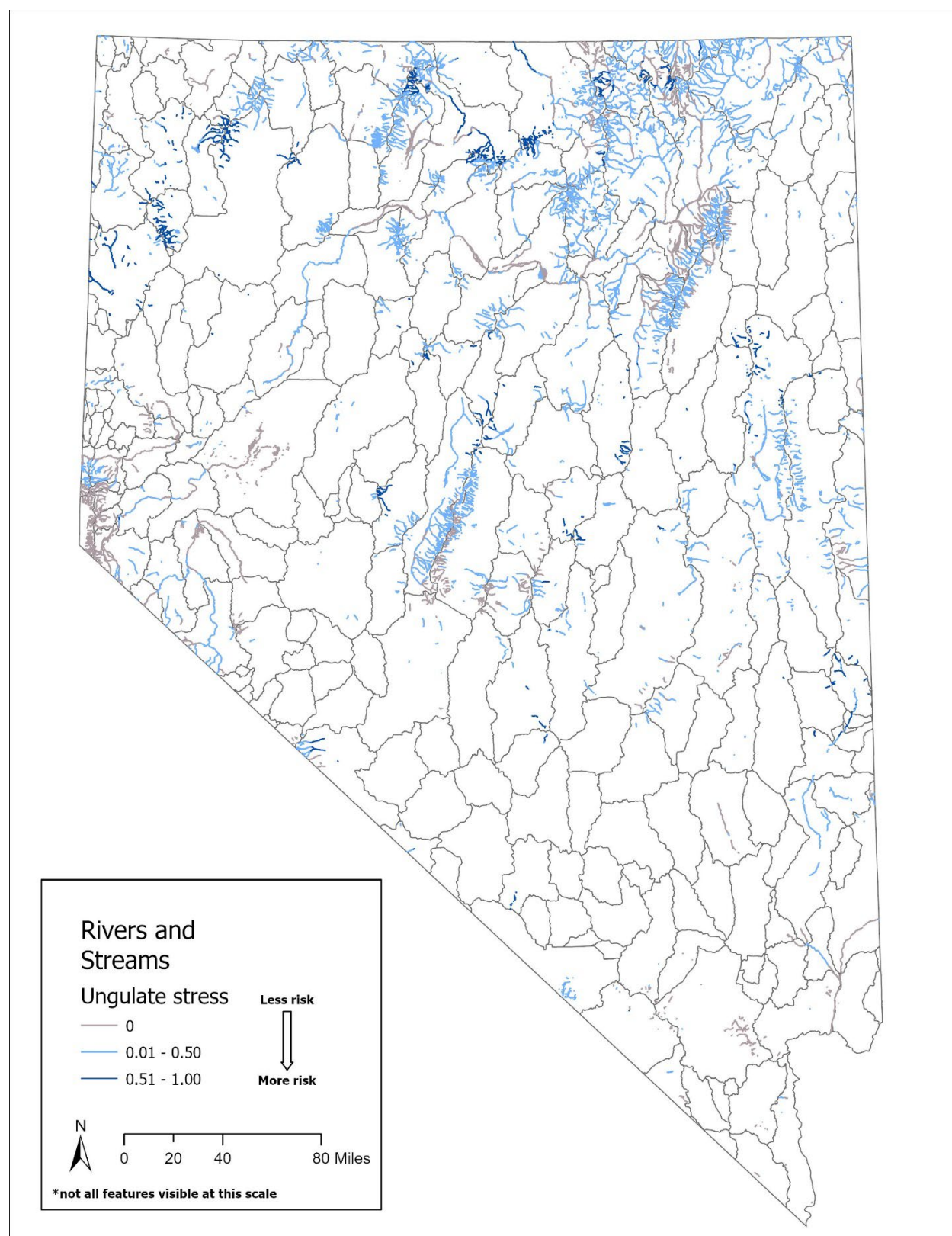


Figure J-5. Ungulate stressor risk factor values to GDE rivers and streams in Nevada. Ratings are from 0.00 (negligible risk) to 1.00 (high risk).

APPENDIX K: Maps of ungulate threat risk factors to GDEs in Nevada

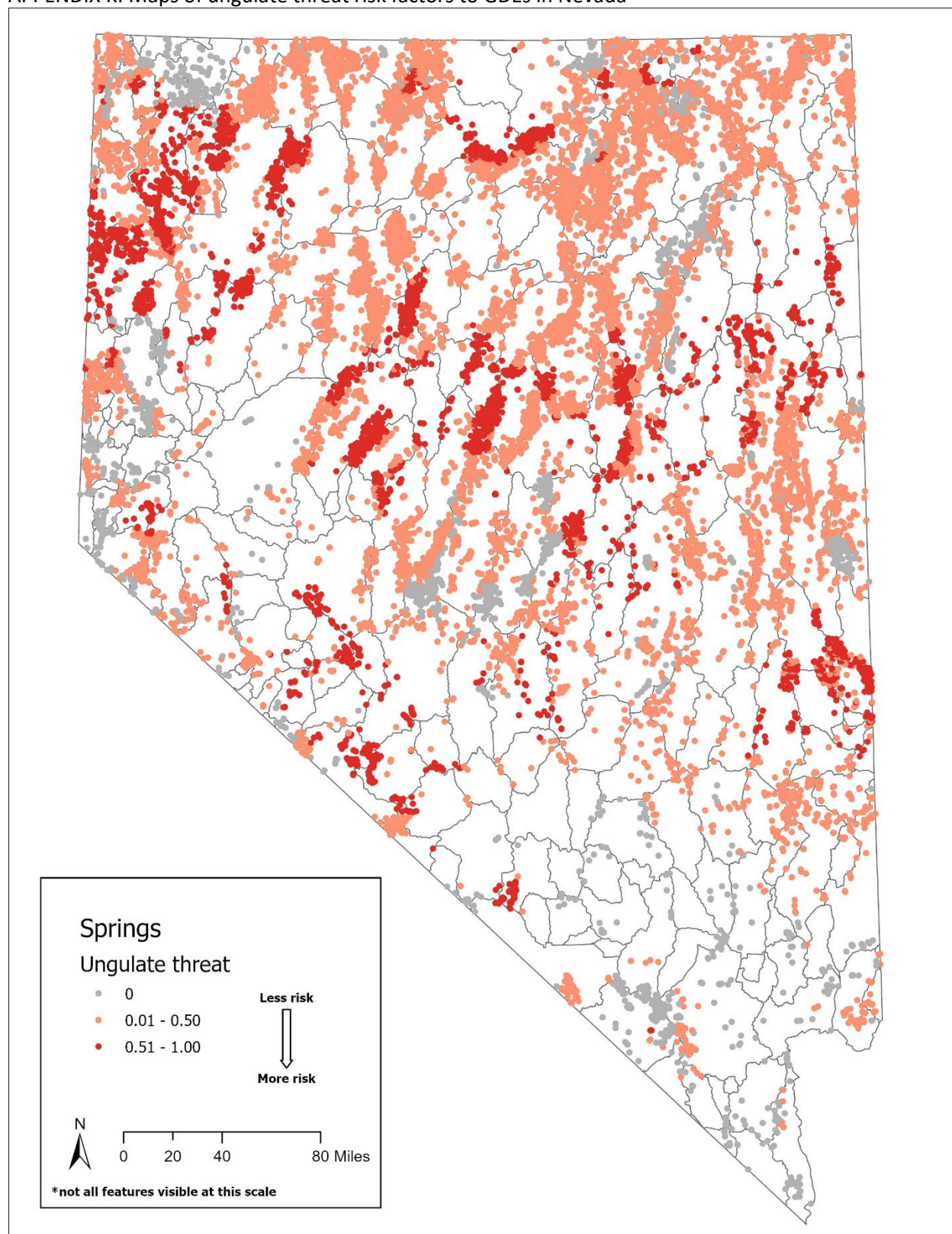


Figure K-1. Ungulate threat risk factor values for GDE springs in Nevada. Ratings are from 0.00 (negligible risk) to 1.00 (high risk).

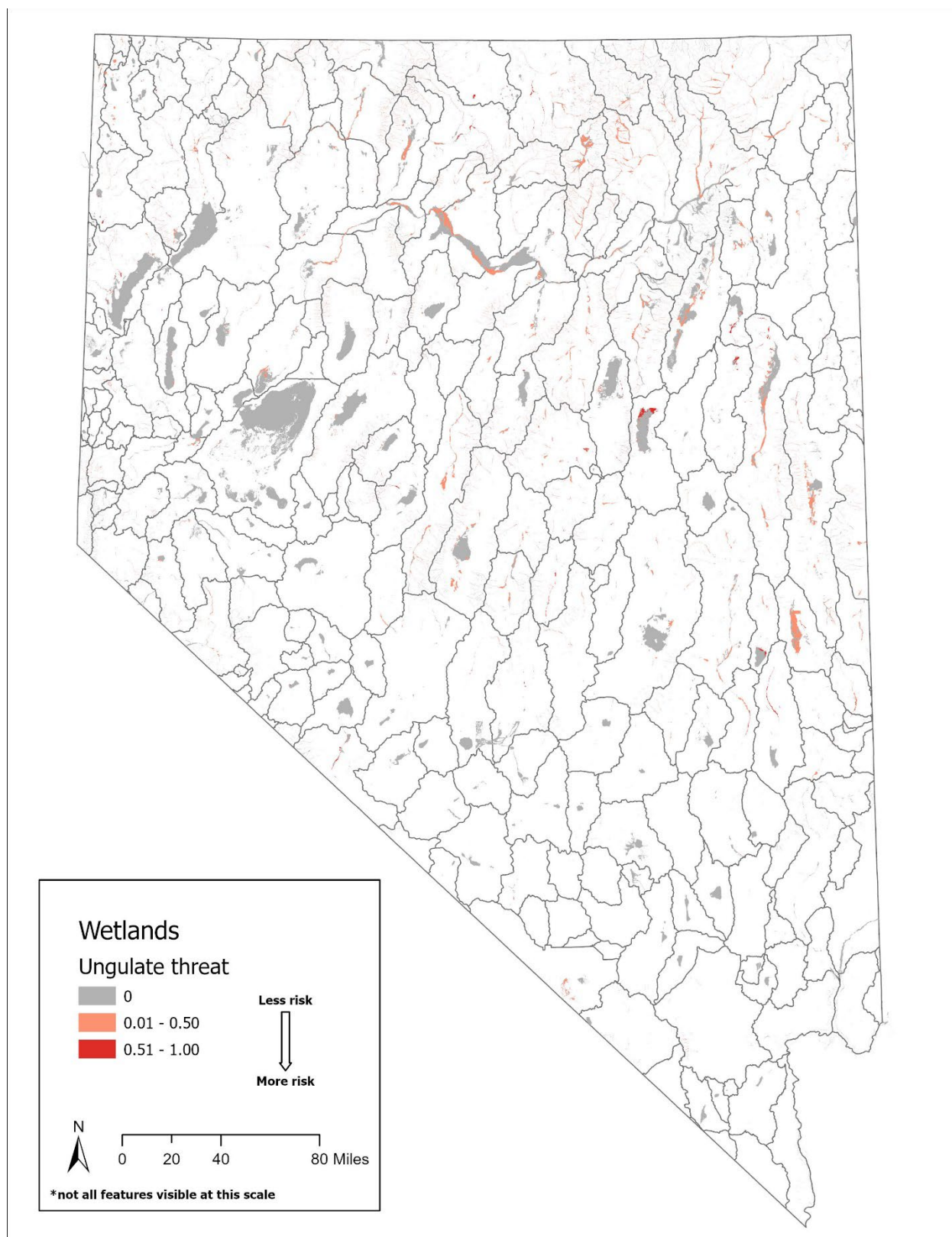


Figure K-2. Ungulate threat risk factor values to GDE wetlands in Nevada. Ratings are from 0.00 (negligible risk) to 1.00 (high risk).

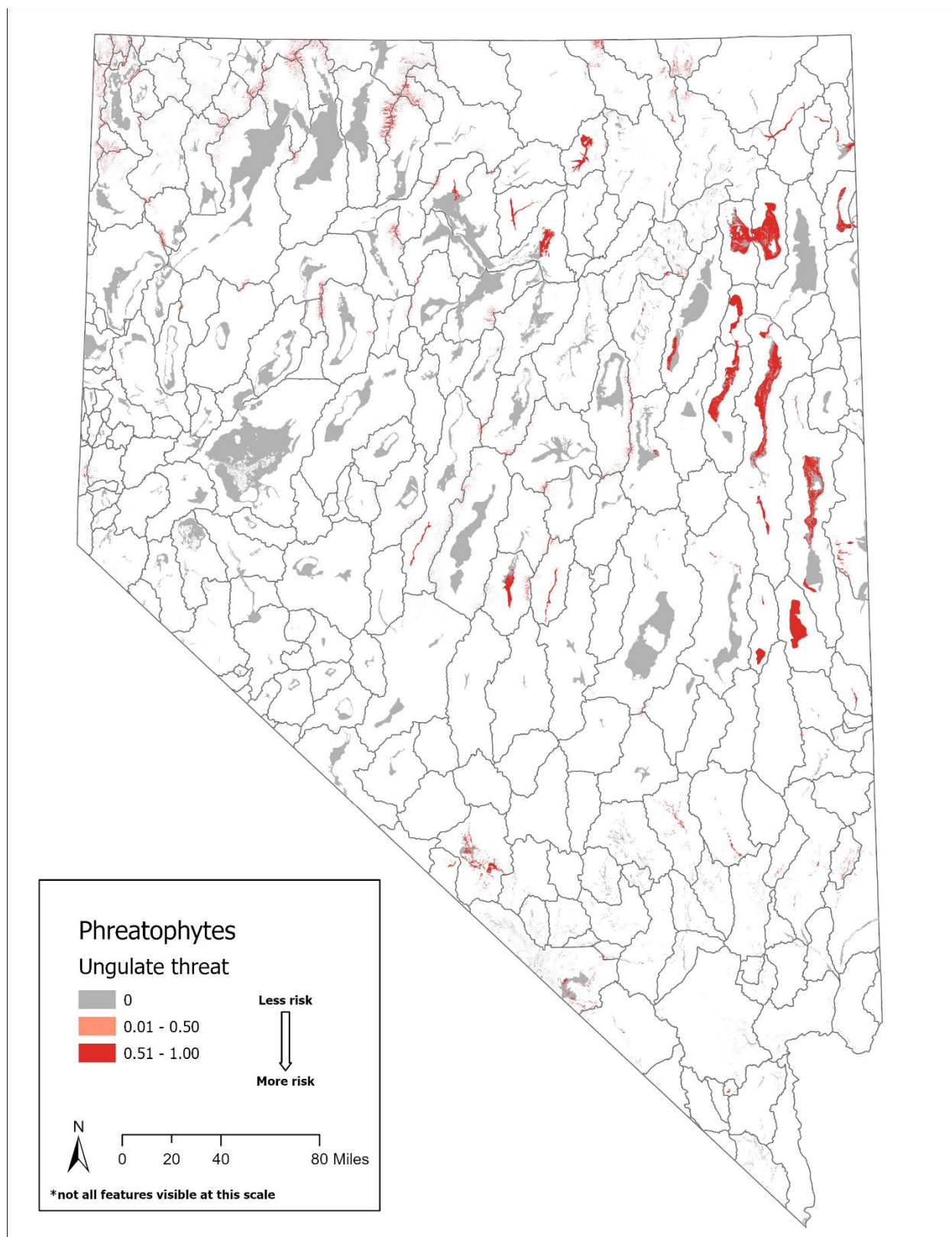


Figure K-3. Ungulate threat risk factor values to GDE phreatophyte communities in Nevada. Ratings are from 0.00 (negligible risk) to 1.00 (high risk).

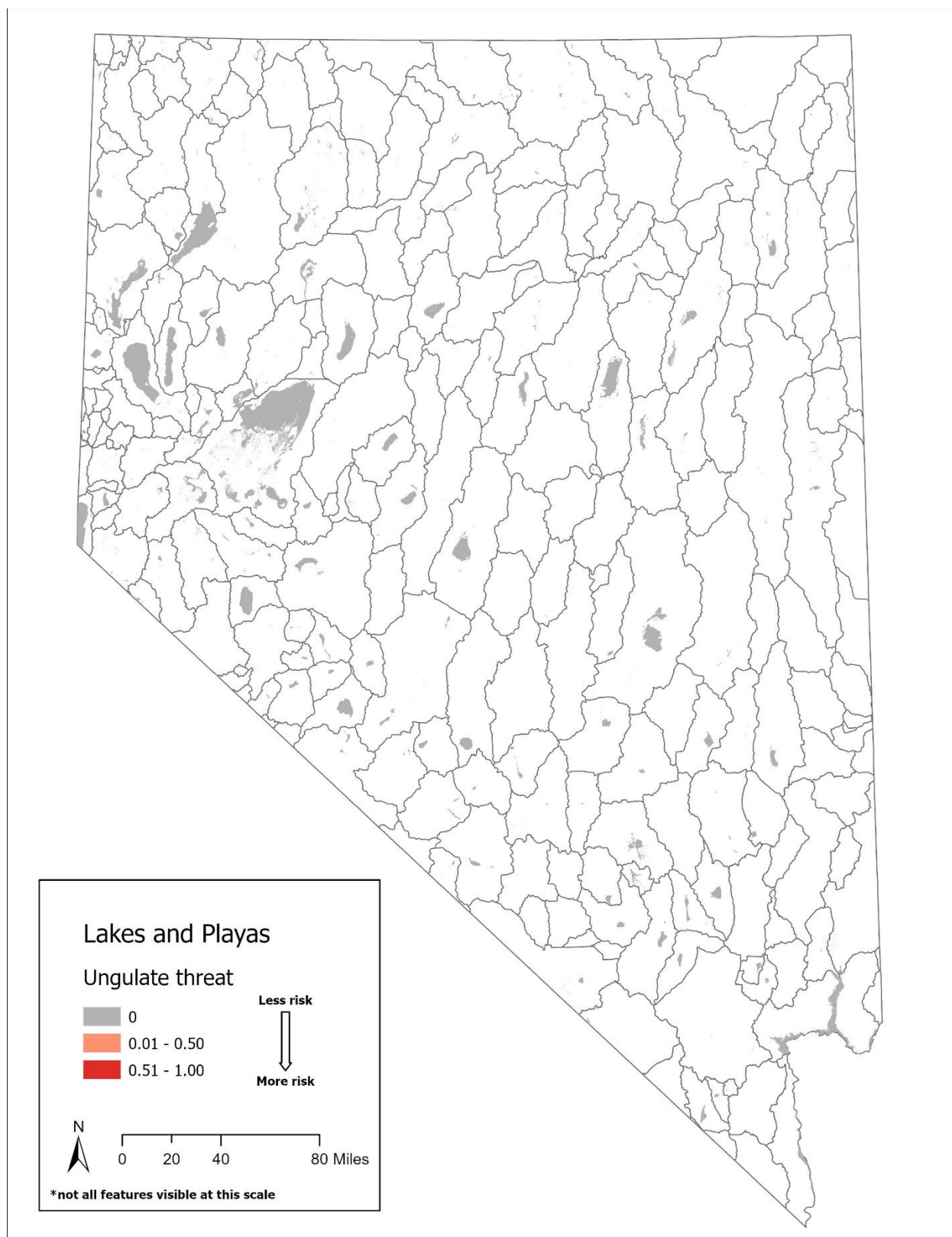


Figure K-4. Ungulate threat risk factor values to GDE lakes and playas in Nevada. Ratings are from 0.00 (negligible risk) to 1.00 (high risk).

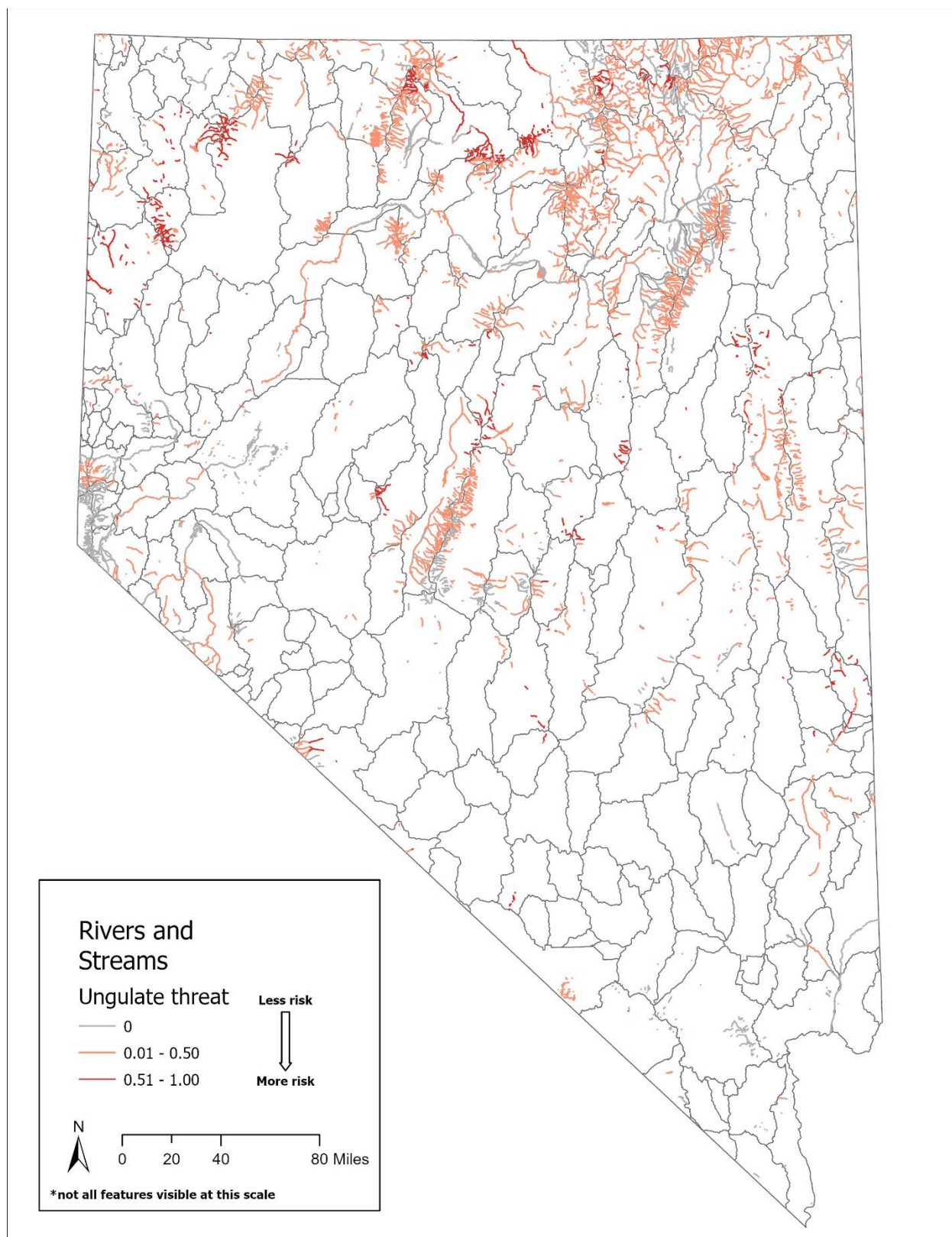


Figure K-5. Ungulate threat risk factor values to GDE rivers and streams in Nevada. Ratings are from 0.00 (negligible risk) to 1.00 (high risk).