

## APPENDIX E: Maps of groundwater withdrawal stressor risk factors to GDEs in Nevada

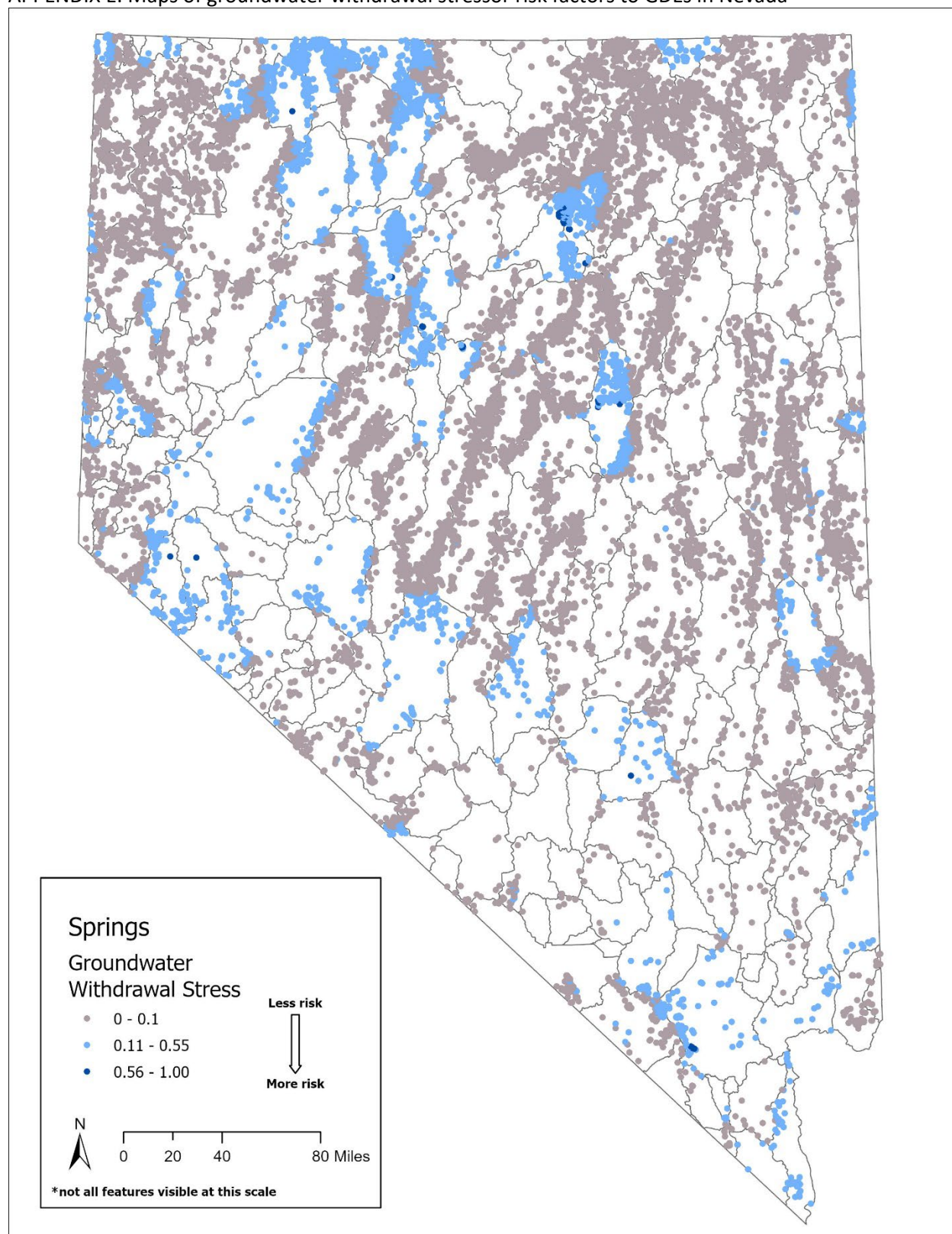


Figure E-1. Groundwater withdrawals stressor risk factor values for GDE springs in Nevada. Ratings are from 0.00 (negligible risk) to 1.00 (high risk).

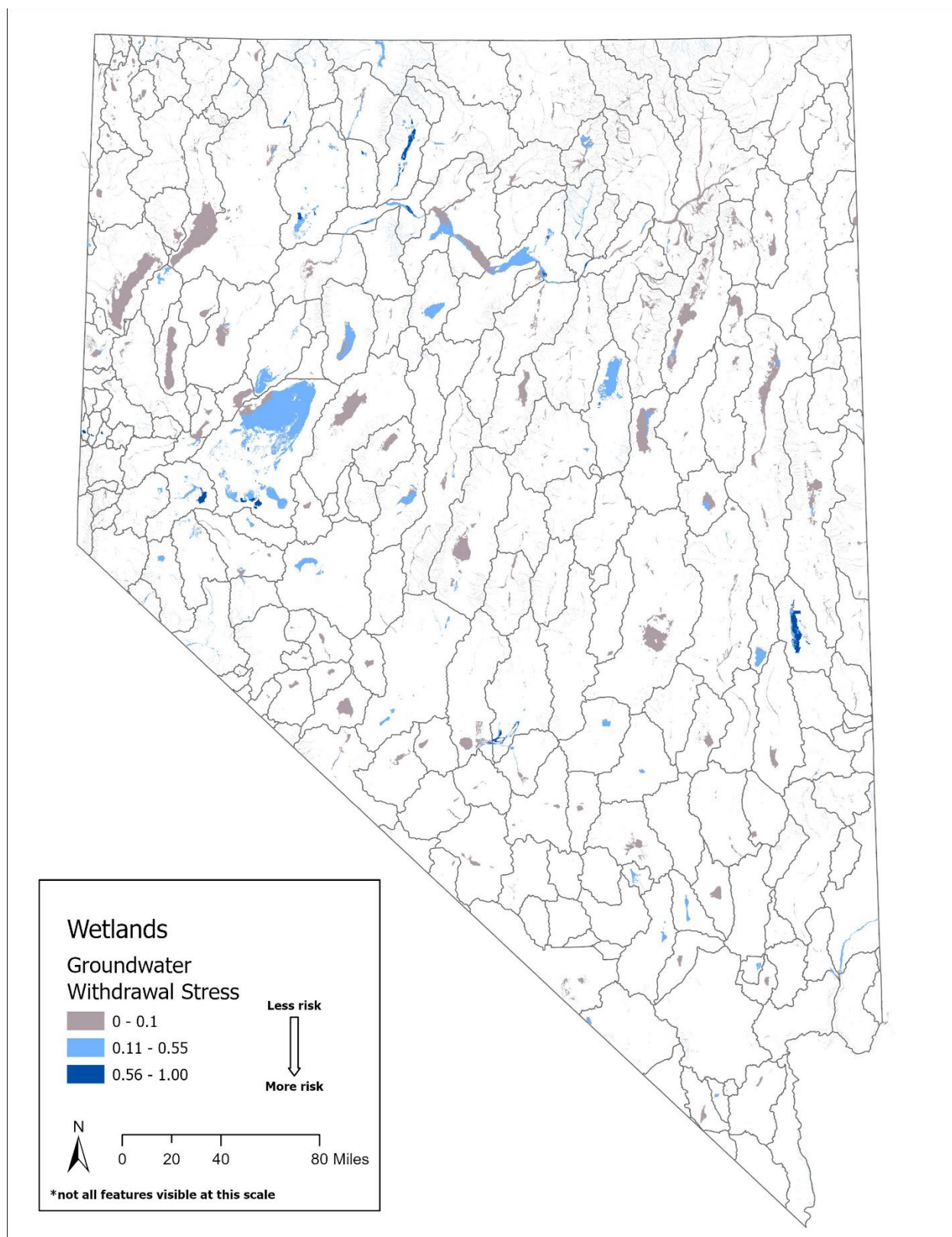


Figure E-2. Groundwater withdrawals stressor risk factor values to GDE wetlands in Nevada. Ratings are from 0.00 (negligible risk) to 1.00 (high risk).



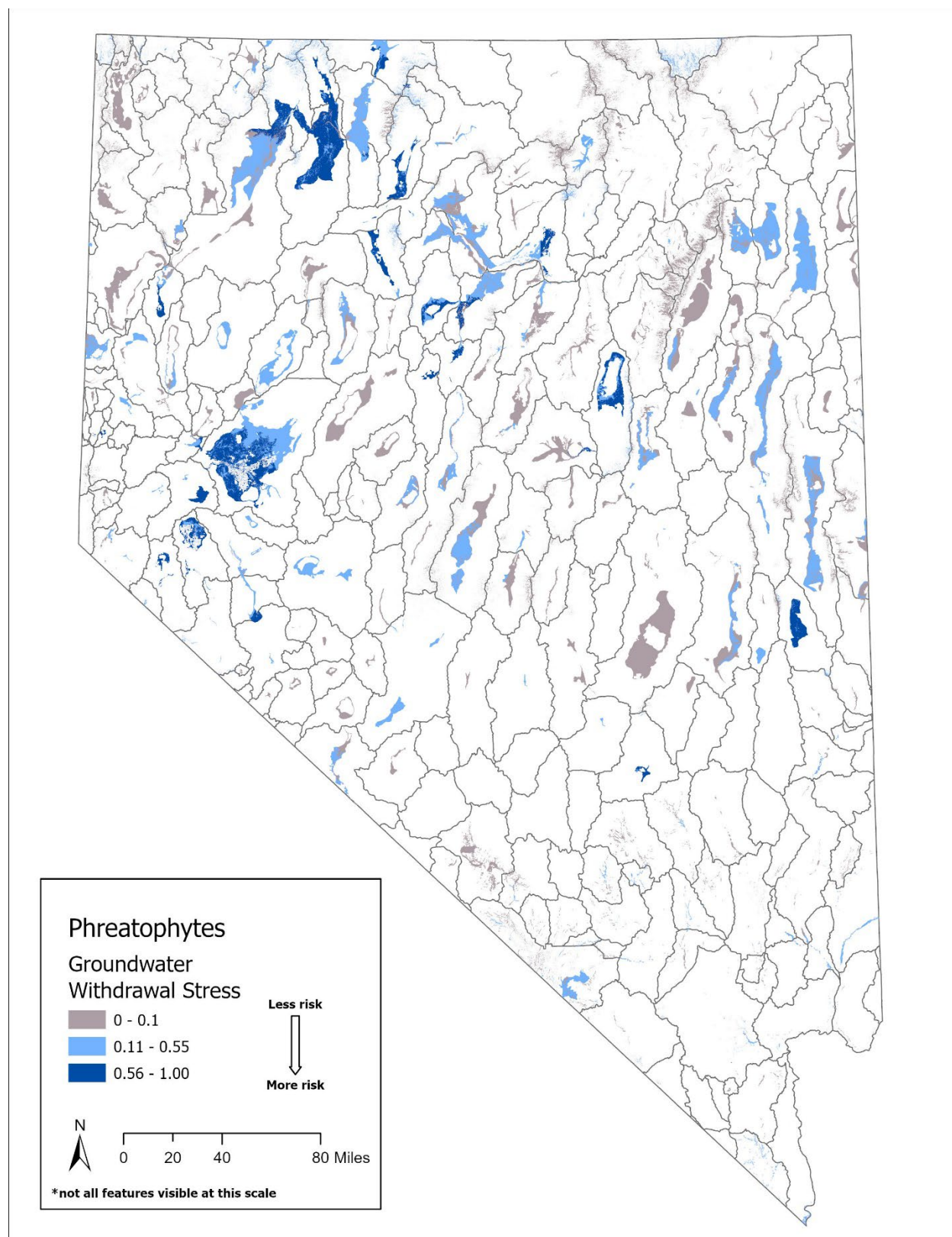


Figure E-3. Groundwater withdrawals stressor risk factor values to GDE phreatophyte communities in Nevada. Ratings are from 0.00 (negligible risk) to 1.00 (high risk).

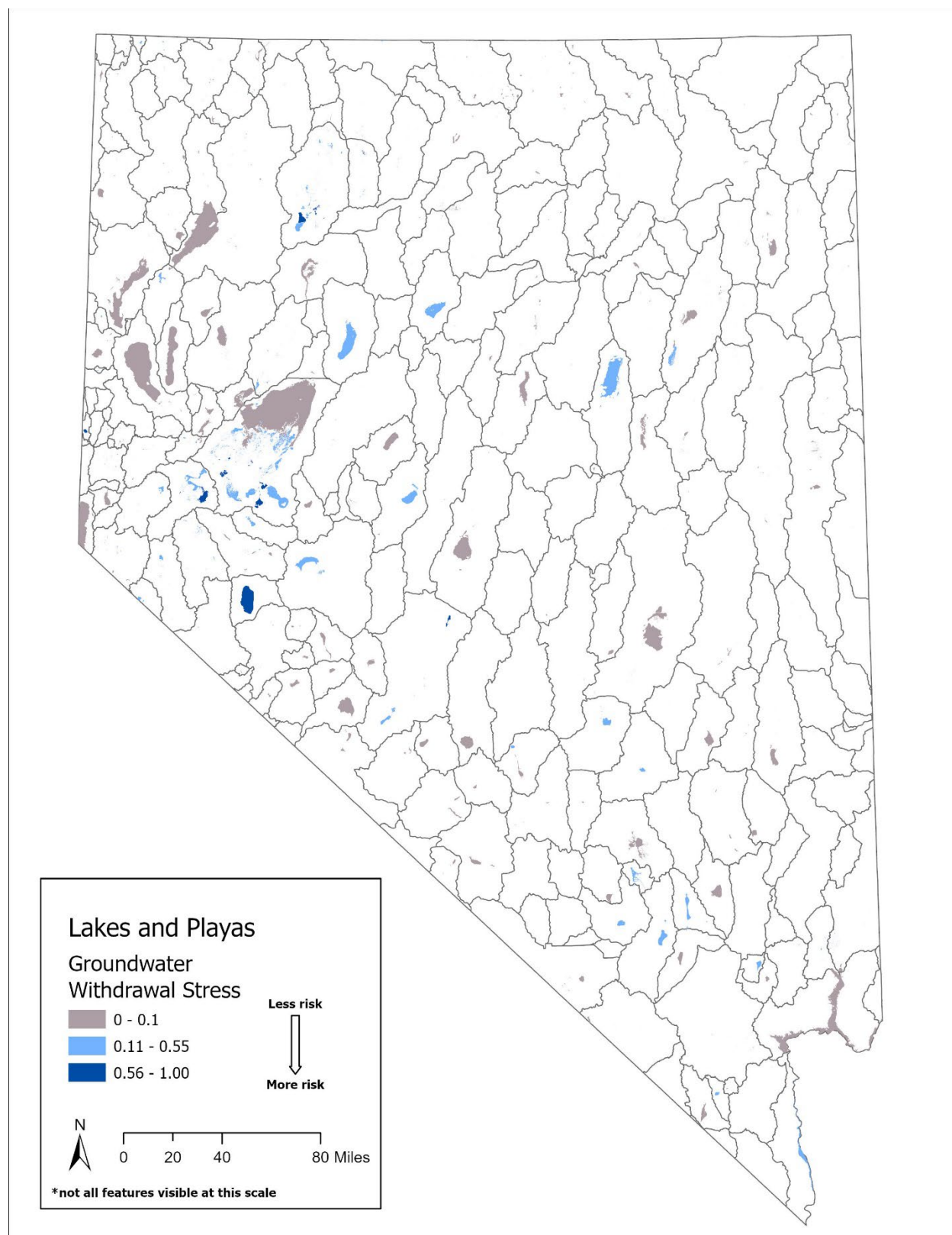


Figure E-4. Groundwater withdrawals stressor risk factor values to GDE lakes and playas in Nevada. Ratings are from 0.00 (negligible risk) to 1.00 (high risk).

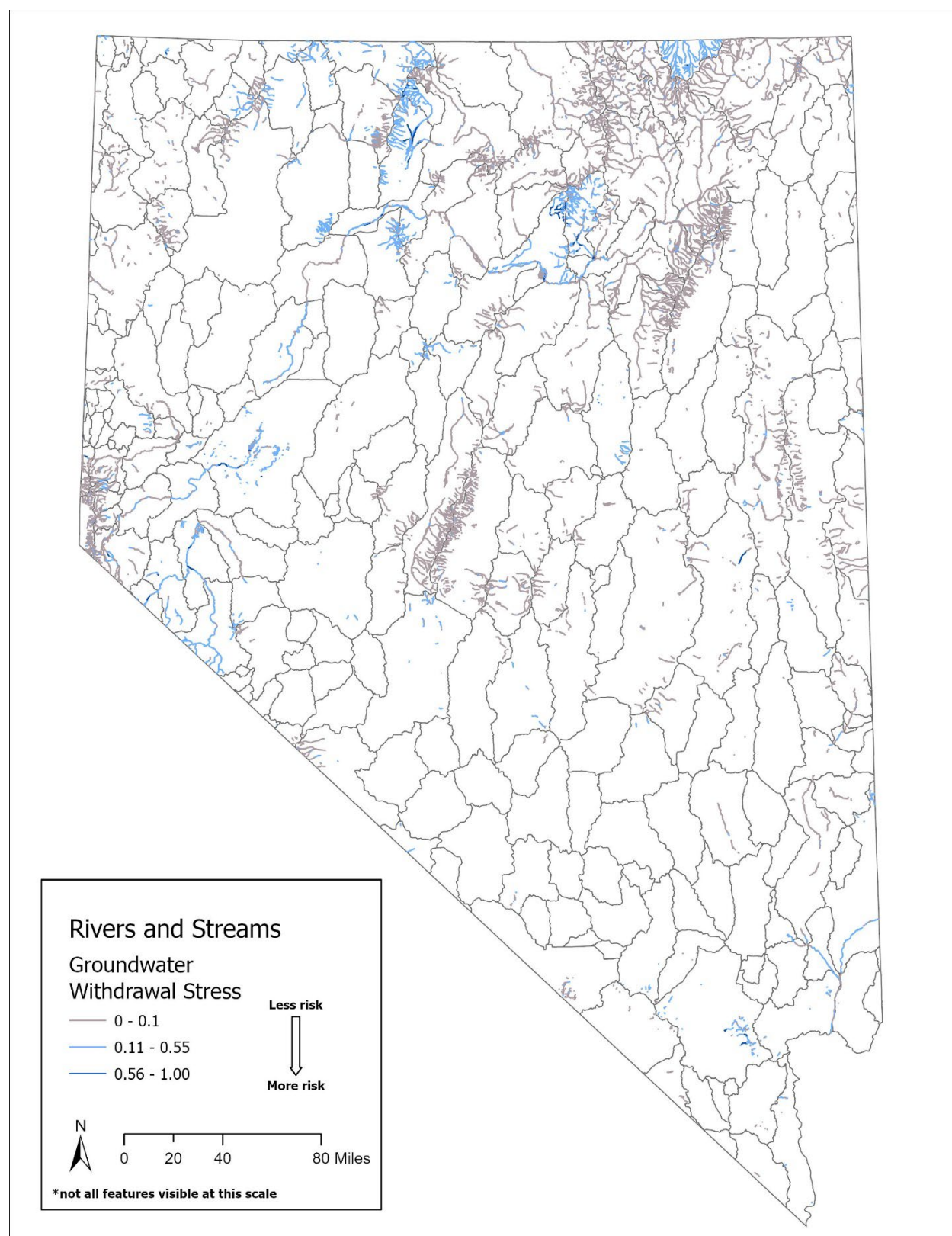


Figure E-5. Groundwater withdrawals stressor risk factor values to GDE rivers and streams in Nevada. Ratings are from 0.00 (negligible risk) to 1.00 (high risk).



## APPENDIX F: Maps of groundwater withdrawal threat risk factors to GDEs in Nevada

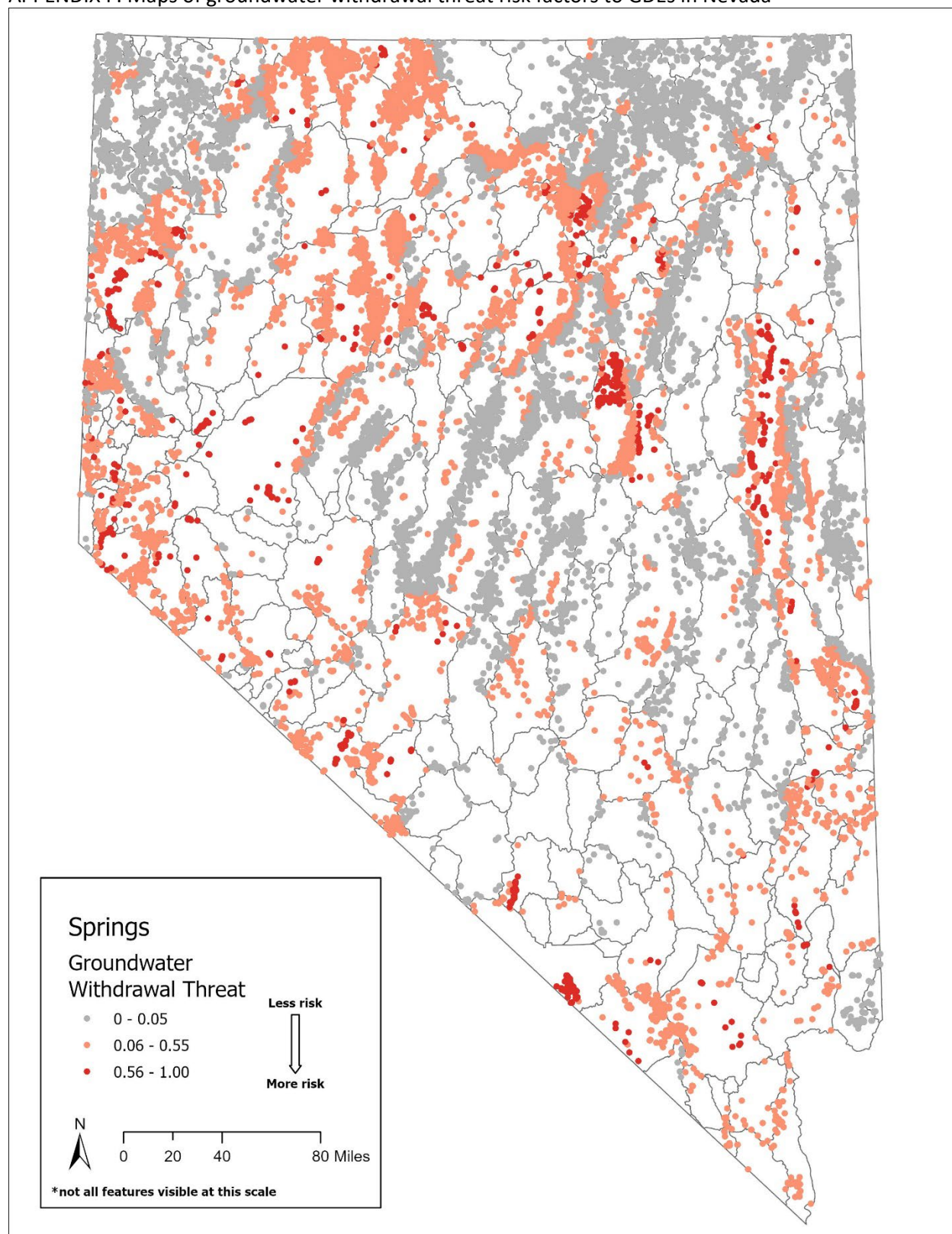


Figure F-1. Groundwater withdrawals threat risk factor values for GDE springs in Nevada. Ratings are from 0.00 (negligible risk) to 1.00 (high risk).

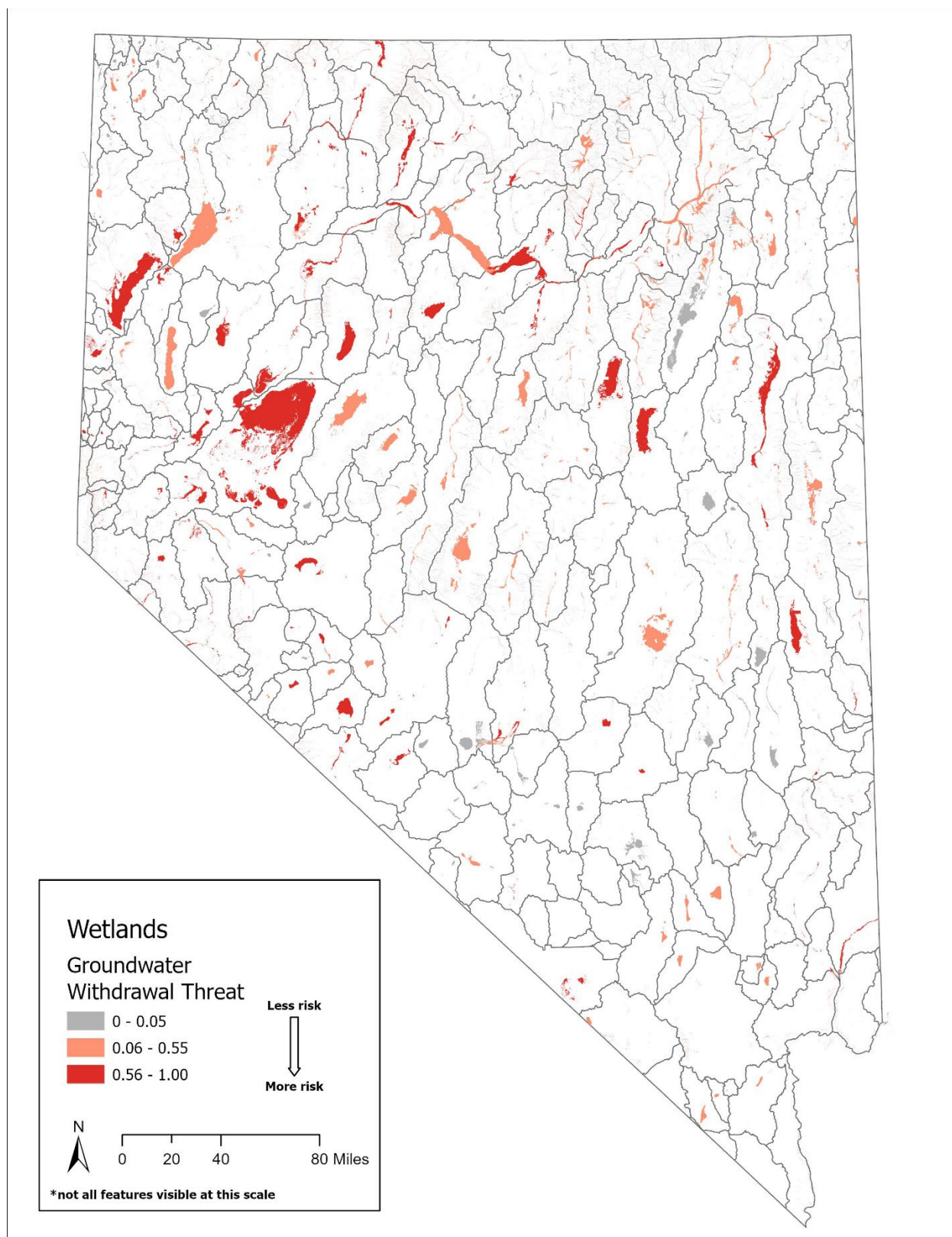


Figure F-2. Groundwater withdrawals threat risk factor values to GDE wetlands in Nevada. Ratings are from 0.00 (negligible risk) to 1.00 (high risk).



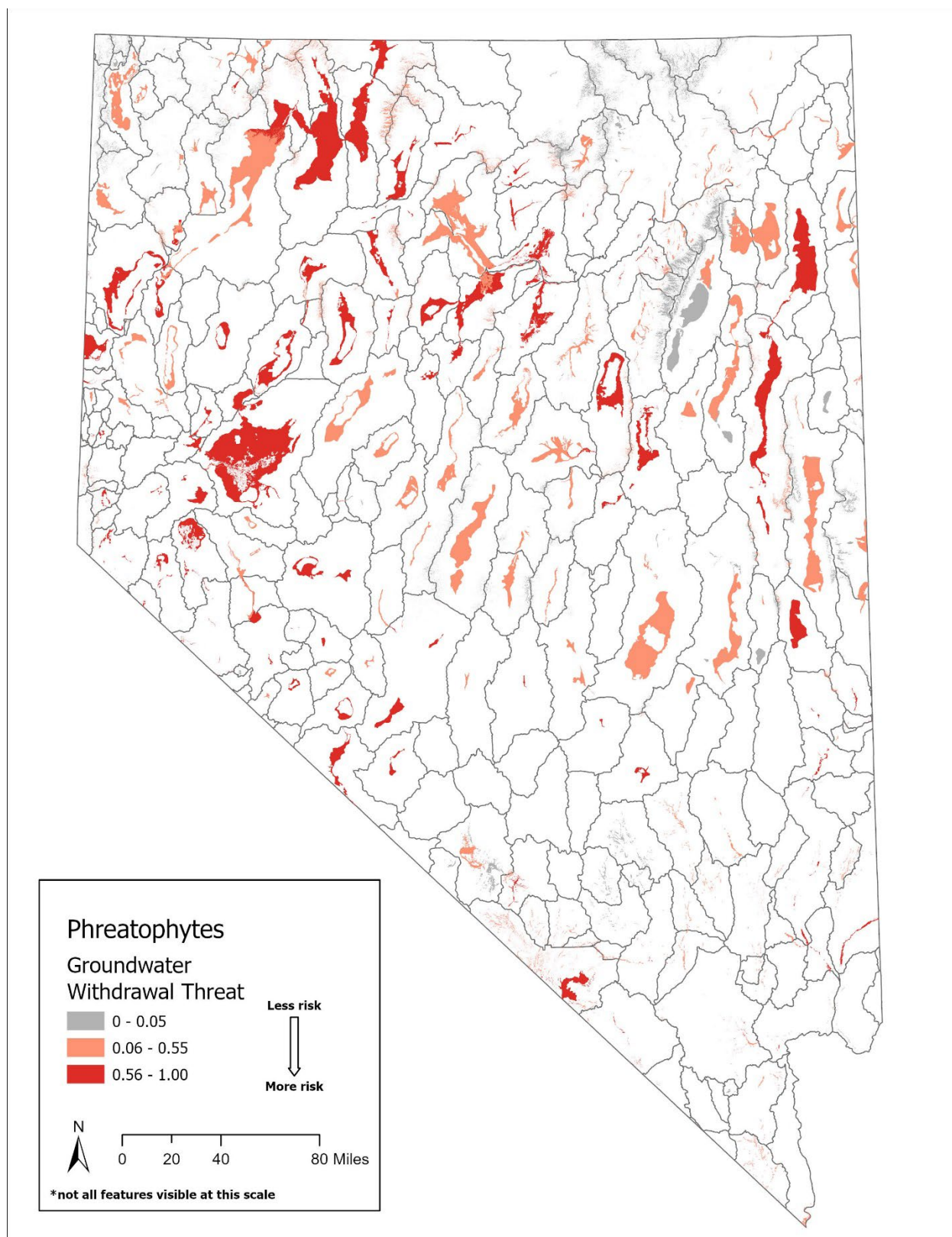


Figure F-3. Groundwater withdrawals threat risk factor values to GDE phreatophyte communities in Nevada. Ratings are from 0.00 (negligible risk) to 1.00 (high risk).



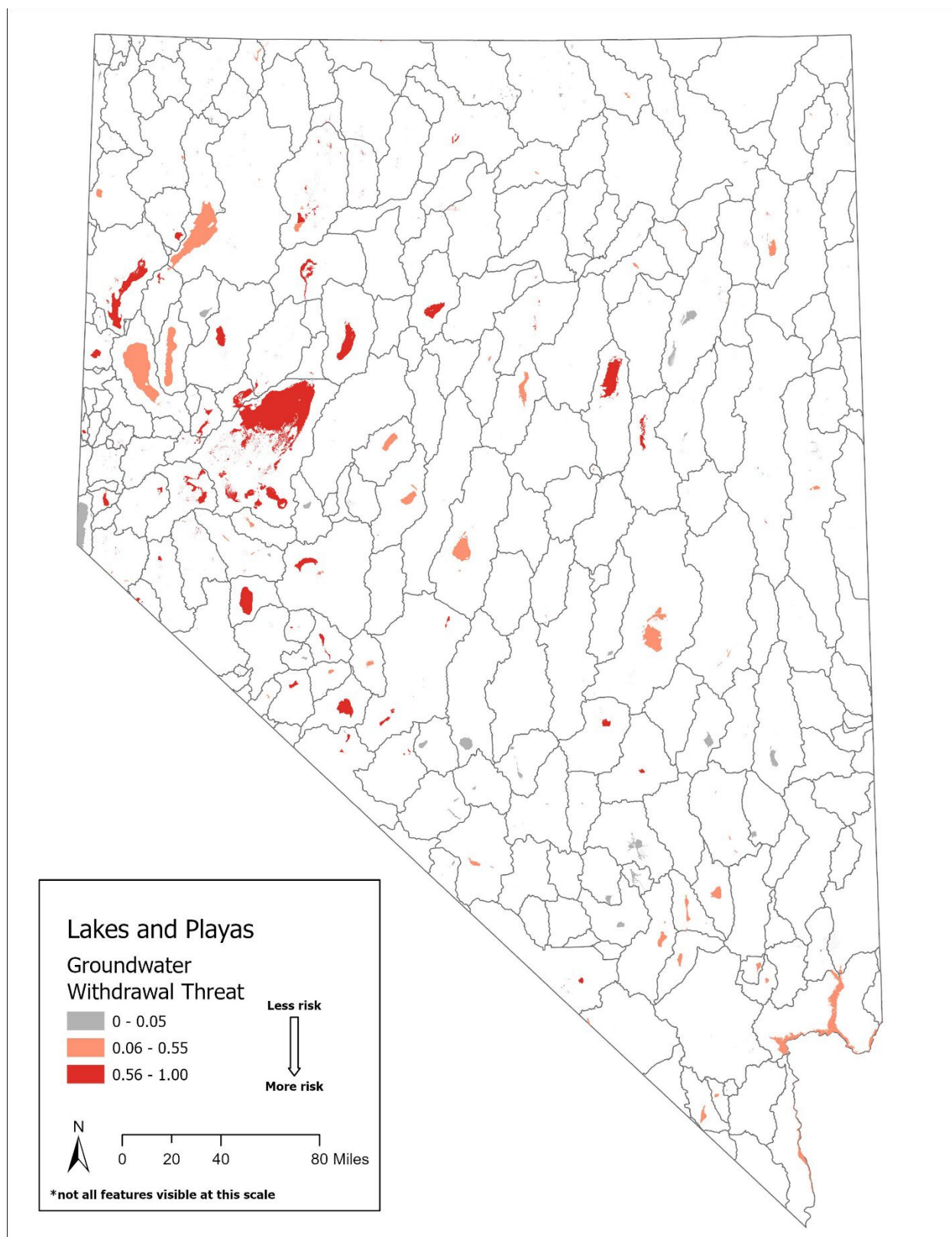


Figure F-4. Groundwater withdrawals threat risk factor values to GDE lakes and playas in Nevada. Ratings are from 0.00 (negligible risk) to 1.00 (high risk).

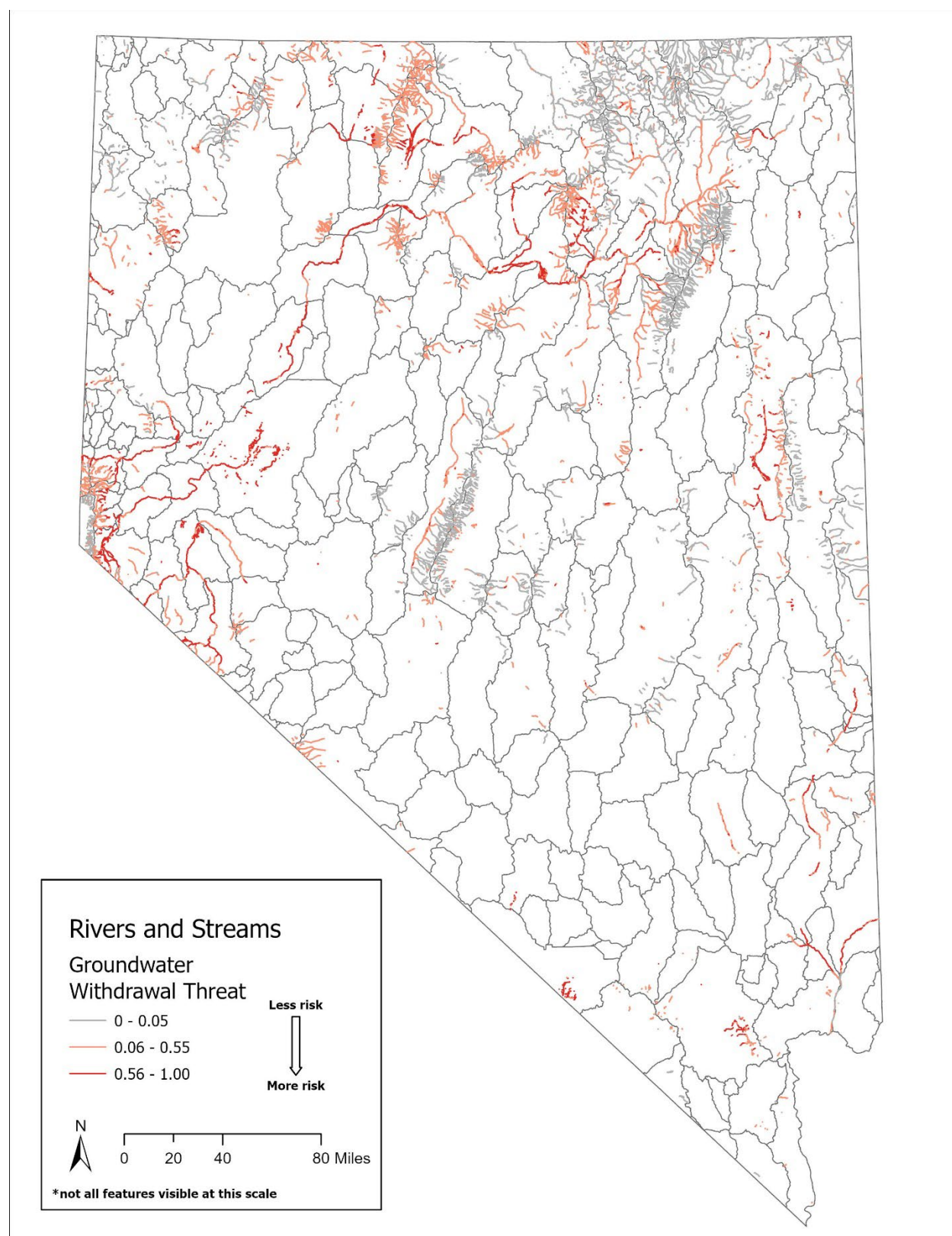


Figure F-5. Groundwater withdrawals threat risk factor values to GDE rivers and streams in Nevada. Ratings are from 0.00 (negligible risk) to 1.00 (high risk).